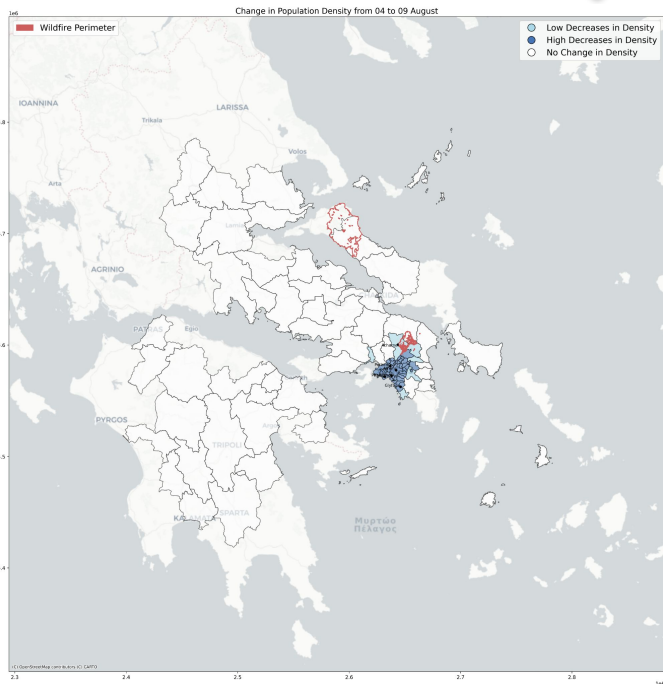


# Disaster Mobility Situation Report

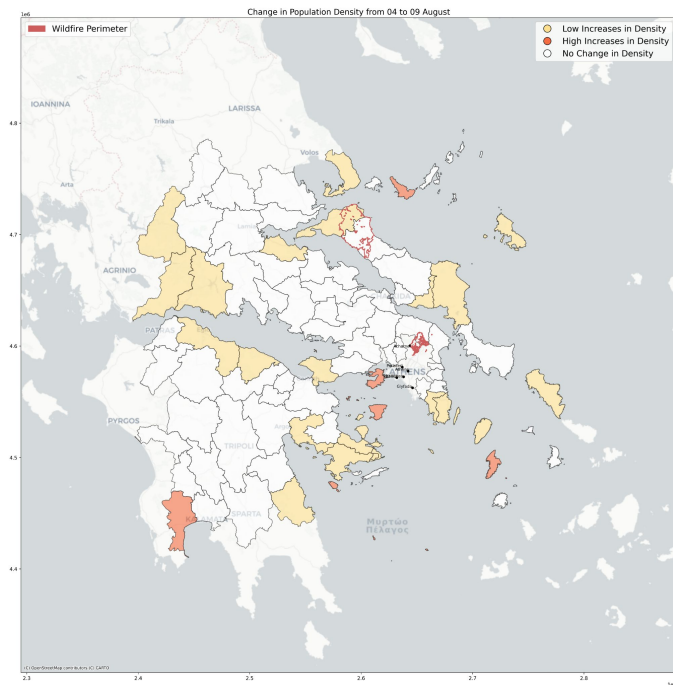
## Greece Fires in Acharnes (04 - 09th August, 2021)

**SUMMARY:** Fires around Attica and Evia began around 3rd August 2021 burning at least 40,000 acres. Significant population density declines have been recorded across Attica for the 6 day period whereas in Evia evacuations took place on the 6th and 7th of August. Largest population increases have been reported in Salamina, Messini and Skopelos. There were no network outages reported around the wildfire perimeters.

### Areas of Population Density Decrease



### Areas of Population Density Increase



## AREAS WITH GREATEST DECREASES IN POPULATION DENSITY (%)



- Amaroussio, Attica (-24%)
- Alimos, Attica (-22%)
- Lykovrysi-Pefki, Attica (-23%)
- Filothei-Psychiko, Attica (-25%)
- Chalandri, Attica (-25%)

## AREAS WITH GREATEST INCREASES IN POPULATION DENSITY (%)



- Salamina, Attica (+39%)
- Messini, Peloponnese (+39%)
- Aegina, Attica (+52%)
- Skopelos, Thessaly (+73%)
- Kythons, South Aegean (+64%)

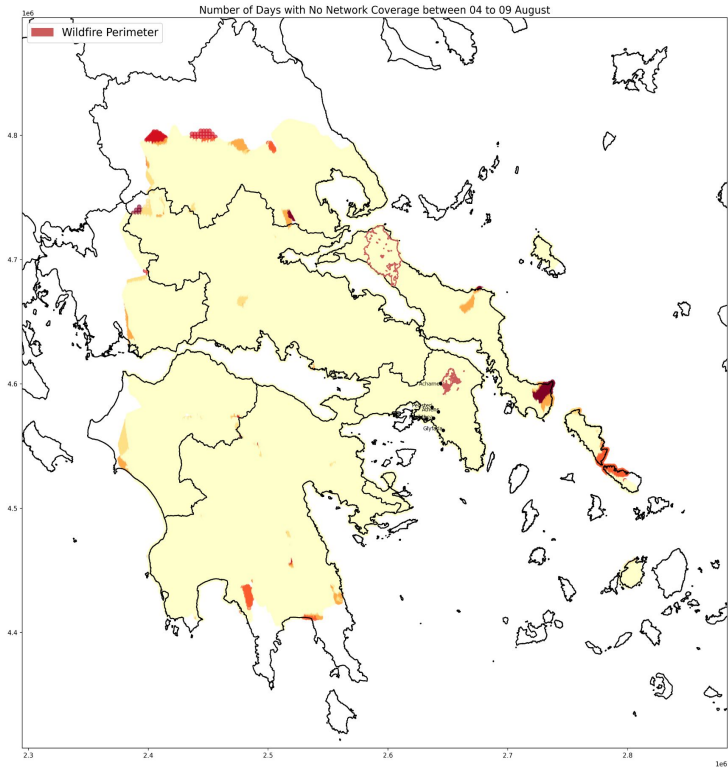
## ORIGINS (FROM AREAS WITH LARGEST DECREASES IN POPULATION DENSITY)

From	To	Avg. Distance Traveled	Z-Score
Kentrikos Tomeas Athinon	Achaia	150.1	4.0
Kentrikos Tomeas Athinon	Anatoliki Attiki	16.08	1.33
Kentrikos Tomeas Athinon	Peiraias	11.88	0.69
Kentrikos Tomeas Athinon	Notios Tomeas Athinon	10.16	0.62
Kentrikos Tomeas Athinon	Dytikos Tomeas Athinon	6.43	0.13
Notios Tomeas Athinon	Dytiki Attiki	20.73	3.47
Notios Tomeas Athinon	Anatoliki Attiki	14.81	0.8
Notios Tomeas Athinon	Voreios Tomeas Athinon	13.87	0.53
Notios Tomeas Athinon	Dytikos Tomeas Athinon	11.7	0.47
Notios Tomeas Athinon	Peiraias	8.79	0.18
Voreios Tomeas Athinon	Andros	83.94	4.0
Voreios Tomeas Athinon	Korinthia	56.67	4.0
Voreios Tomeas Athinon	Dytiki Attiki	12.84	1.22
Voreios Tomeas Athinon	Anatoliki Attiki	10.34	0.58
Voreios Tomeas Athinon	Peiraias	16.29	0.46

## DESTINATIONS (TO AREAS WITH LARGEST INCREASES IN POPULATION DENSITY)

To	From	Avg. Distance Traveled	Z-Score
Kea-Kythnos	Peiraias	93.33	2.49
Kea-Kythnos	Anatoliki Attiki	46.65	2.46
Kea-Kythnos	Kea-Kythnos	1.95	1.79
Perifereiaki Enotita Nison	Evoia	101.63	4.0
Perifereiaki Enotita Nison	Dytiki Attiki	16.86	3.5
Perifereiaki Enotita Nison	Notios Tomeas Athinon	27.23	2.37
Perifereiaki Enotita Nison	Dytikos Tomeas Athinon	17.7	2.04
Perifereiaki Enotita Nison	Kentrikos Tomeas Athinon	32.73	1.8
Sporades	Evoia	63.19	4.0
Sporades	Sporades	1.73	2.76

## NETWORK COVERAGE MAP



**LOCATIONS WITH HIGHEST PROPORTIONS OF NETWORK OUTAGES (%)**  
(Calculated as a percentage of grid cell tiles which saw an outage on at least one day during the crisis time period.)

- Karystos (14%)
- Eretria (6%)
- Kymi-Aliveri (6%)
- Almyros (3%)
- Delphi (2%)

**LOCATIONS WITH HIGHEST PROPORTIONS OF NETWORK OUTAGES AND HIGH POPULATION DENSITY (COUNT)**

(Calculated as a count of Facebook users located in areas which saw as outage on at least one day during the crisis time period.)

- Tripoli (55)
- Lamia (54)
- Livadeia (47)
- Argos-Mykines (35)
- Nafplio (33)

## On the Data:

This report is produced using data from Facebook Data for Good. All metrics are calculated based on the aggregated locations of Facebook app users who have opted in to location services.

- Change in **population density** is calculated according to the change in the proportion of Facebook users relative to a baseline measure from 90 days prior to the onset of the crisis.
- Change in **movement between administrative units** is calculated according to the modal movement between units relative to a baseline measure from 90 days prior to the onset of the crisis.
- Change in **network coverage** is calculated according to the probability that Facebook users were able to connect to cellular data antennas located in the area of interest.