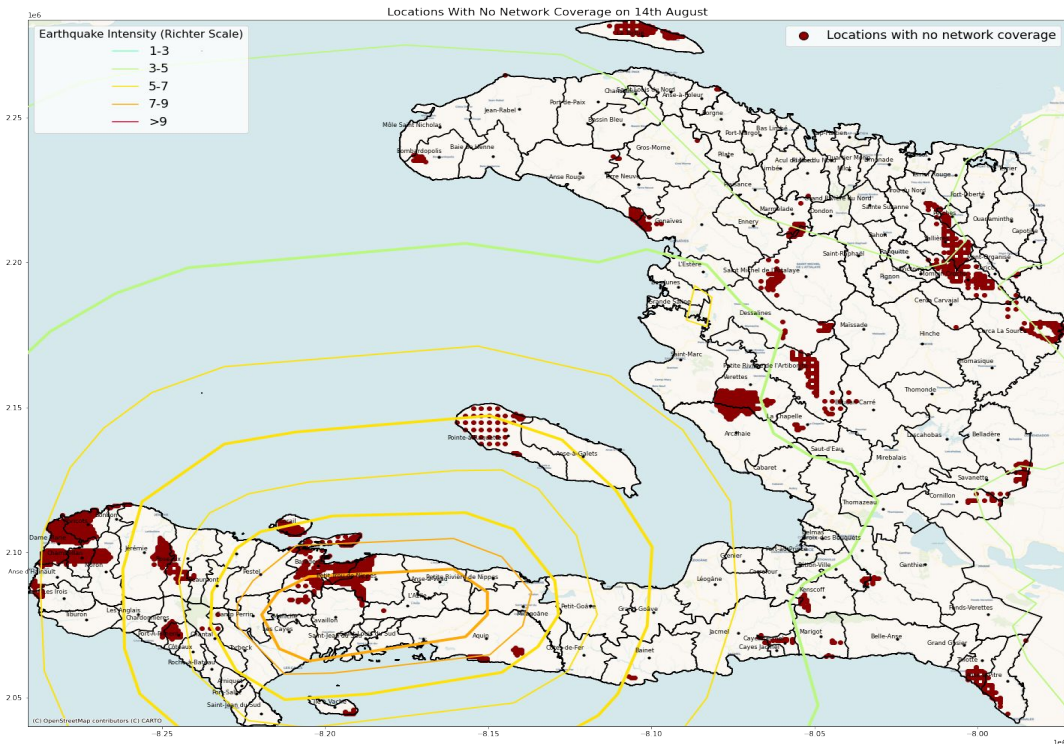


Disaster Network Situation Report

Earthquake in Nippes, Haiti (14th August, 2021)

SUMMARY: A 7.2 magnitude was recorded in Nippes, Haiti early in the morning on 14th August, 2021. Over 1500 deaths, and nearly 6900 injuries have been reported. Population movements primarily took place away from highly damage parts of Les Cayes but remained highly localised, possibly due to obstructions in the road network related to landslides and gang control of major roadways. There were no network outages recorded around Les Cayes over the 4 day period. Jèrèmie however had major proportions of grid cell tiles with network outages along with high population of facebook users during the first 72 hours

NETWORK COVERAGE MAP



LOCATIONS WITH HIGHEST PROPORTION OF NETWORK OUTAGES (%)

(Calculated as a percentage of grid cell tiles which saw an outage on at least one day during the crisis time period.)

- Bastien, Saint-Marc (16%)
- Fonds Baptiste, l'Arcahaie (14%)
- Desarmes, Saint-Marc (14%)
- Gaillard, Jacmel (10%)
- Boucan Guillaume, Belle-Anse (9%)

LOCATIONS WITH HIGHEST PROPORTIONS OF NETWORK OUTAGES AND HIGH POPULATION DENSITY (COUNT)

(Calculated as a count of Facebook users located in areas which saw as outage on at least one day during the crisis time period.)

- Bassin, les Gonaïves (41)
- Boucan Guillaume, Belle-Anse (40)
- Bas Cap-Rouge, Jacmel (31)
- Grand Boucan, l'Anse-à-Veau (30)
- Rivière Blanche, Gros-Morne (26)

Data Sources

Inset map based on: Facebook Data for Good, Network Coverage Data, 2021

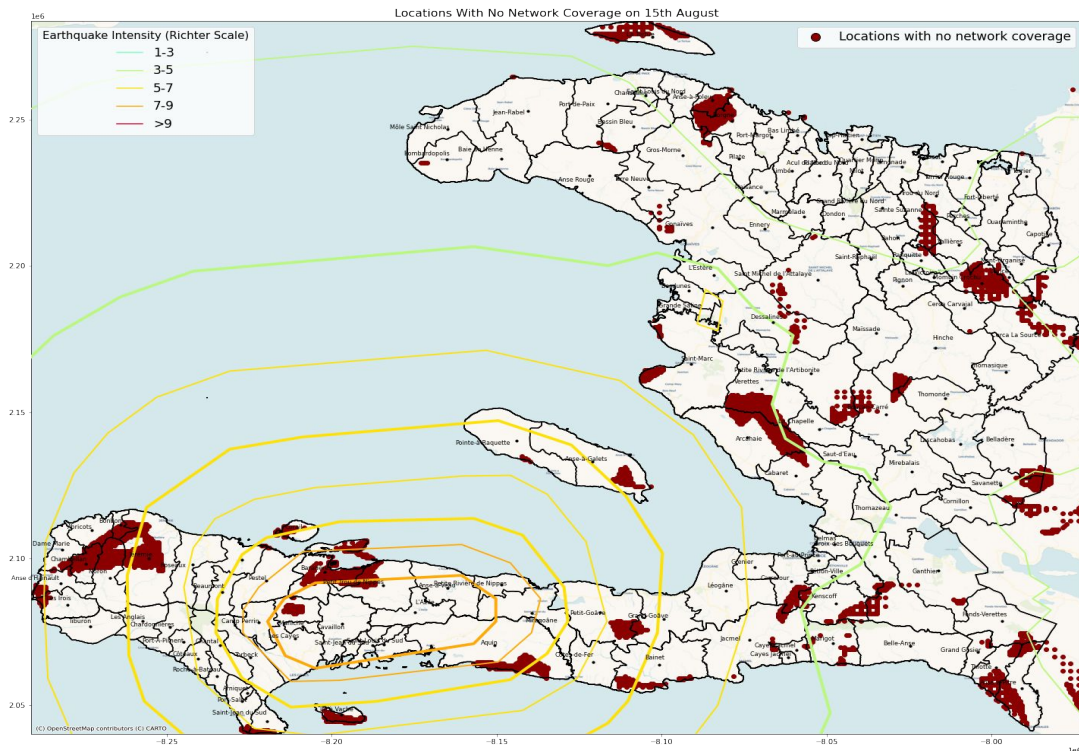
Note on the calculations: Change in **network coverage** is calculated according to the probability that Facebook users were able to connect to cellular data antennas located in the area of interest.

Basemap based on: Carto Voyager, 2021

Disaster Network Situation Report

Earthquake in Nippes, Haiti (15th August, 2021)

NETWORK COVERAGE MAP



LOCATIONS WITH HIGHEST PROPORTION OF NETWORK OUTAGES (%)

(Calculated as a percentage of grid cell tiles which saw an outage on at least one day during the crisis time period.)

- Grand Boucan, L'Anse-à-Veau (60%)
- Marfranc, Jèrémie (47%)
- Fonds Rogue Dahere, Jèrémie (41%)
- Dèsarmeres, Saint-Marc (31%)
- Boucan Guillaume, Belle-Anse (31%)

LOCATIONS WITH HIGHEST PROPORTIONS OF NETWORK OUTAGES AND HIGH POPULATION DENSITY (COUNT)

(Calculated as a count of Facebook users located in areas which saw as outage on at least one day during the crisis time period.)

- Bois Neuf, Saint Marc (50)
- Petite Anse, La Gonave (44)
- Boucan Guillaume, Belle-Anse (39)
- Bassin, Les Gonaïves (38)
- Juanaria, Hinche (36)

Data Sources

Inset map based on: Facebook Data for Good, Network Coverage Data, 2021

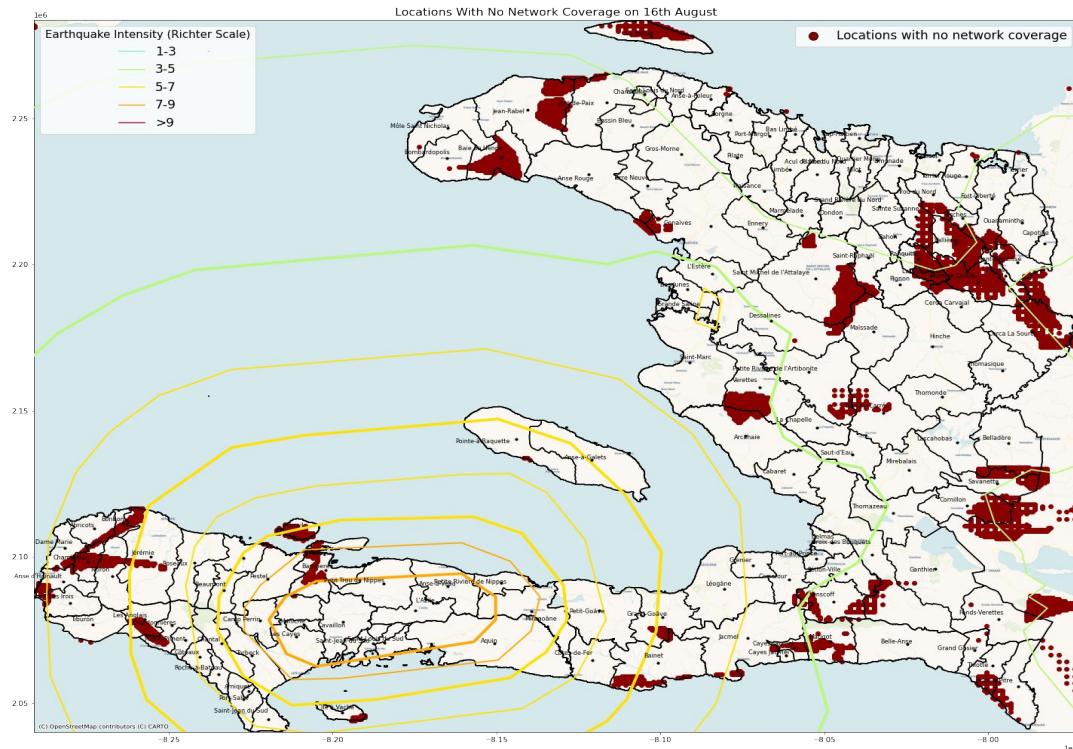
Note on the calculations: Change in **network coverage** is calculated according to the probability that Facebook users were able to connect to cellular data antennas located in the area of interest.

Basemap based on: Carto Voyager, 2021

Disaster Network Situation Report

Earthquake in Nippes, Haiti (16th August, 2021)

NETWORK COVERAGE MAP



LOCATIONS WITH HIGHEST PROPORTION OF NETWORK OUTAGES (%)

(Calculated as a percentage of grid cell tiles which saw an outage on at least one day during the crisis time period.)

- L'Attalaye, Marmelade (53%)
- Fonds Rogue Dahere, Jèrèmie (37%)
- Cayes-Jacmel, Jacmel (36%)
- Acajou Bruler 1, Cerca La Source (25%)
- Boucan Guillaume, Belle-Anse (25%)

LOCATIONS WITH HIGHEST PROPORTIONS OF NETWORK OUTAGES AND HIGH POPULATION DENSITY (COUNT)

(Calculated as a count of Facebook users located in areas which saw as outage on at least one day during the crisis time period.)

- Boucan Guillaume, Belle-Anse (39)
- Bassin, Les Gonaïves (38)
- Bas Cap-Rogue, Jacmel (32)
- Grand Boucan, L'Anse-à-Veau (30)
- Fonds Rogue Dahere, Jèrèmie (30)

Data Sources

Inset map based on: Facebook Data for Good, Network Coverage Data, 2021

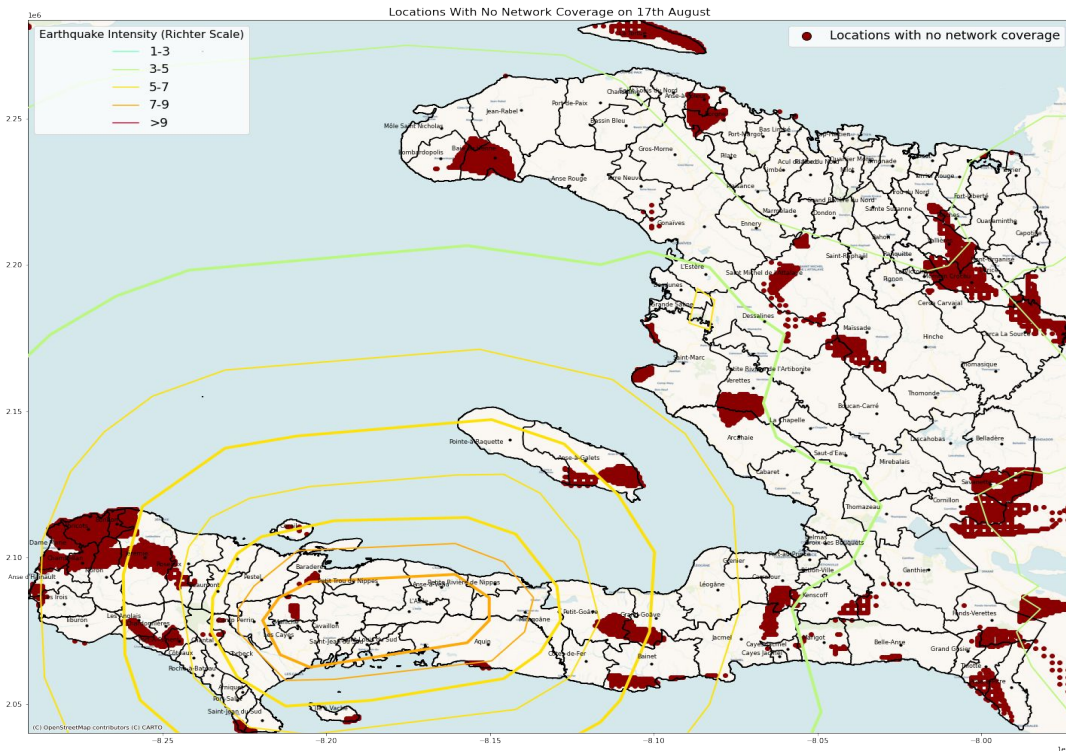
Note on the calculations: Change in **network coverage** is calculated according to the probability that Facebook users were able to connect to cellular data antennas located in the area of interest.

Basemap based on: Carto Voyager, 2021

Disaster Network Situation Report

Earthquake in Nippes, Haiti (17th August, 2021)

NETWORK COVERAGE MAP



LOCATIONS WITH HIGHEST PROPORTION OF NETWORK OUTAGES (%)

(Calculated as a percentage of grid cell tiles which saw an outage on at least one day during the crisis time period.)

- L'Attalaye, Marmelade (53%)
- Fonds Rogue Dahere, Jèrèmie (36%)
- Cayes-Jacmel, Jacmel (35%)
- Acajou Bruler 1, Cerca La Source (25%)
- Grand Boucan, L'Anse-à-Veau (24%)

LOCATIONS WITH HIGHEST PROPORTIONS OF NETWORK OUTAGES AND HIGH POPULATION DENSITY (COUNT)

(Calculated as a count of Facebook users located in areas which saw as outage on at least one day during the crisis time period.)

- Bois Neuf, Saint Marc (50)
- Petite Anse, La Gonave (44)
- Boucan Guillaume, Belle-Anse (40)
- Bassin, les Gonaïves (38)
- Juanaria, Hinche (36)

Data Sources

Inset map based on: Facebook Data for Good, Network Coverage Data, 2021

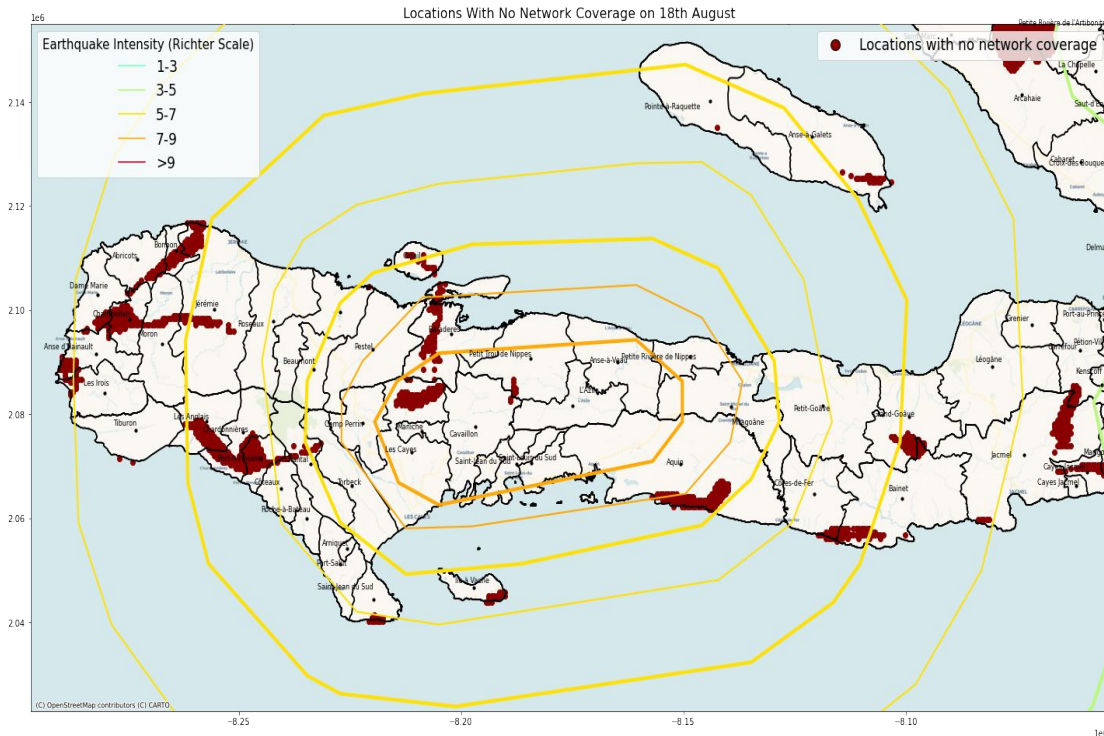
Note on the calculations: Change in **network coverage** is calculated according to the probability that Facebook users were able to connect to cellular data antennas located in the area of interest.

Basemap based on: Carto Voyager, 2021

Disaster Network Situation Report

Earthquake in Nippes, Haiti (18th August, 2021)

NETWORK COVERAGE MAP



LOCATIONS WITH HIGHEST PROPORTION OF NETWORK OUTAGES (%)

(Calculated as a percentage of grid cell tiles which saw an outage on at least one day during the crisis time period.)

- Fonds Rogue Torberck, Jèrémie (37%)
- Petite Anse, La Gonave (21%)
- Gaillard, Jacmel (21%)
- Boucan Guillaume, Belle-Anse (19%)
- Bastien, Saint-Marc (17%)

LOCATIONS WITH HIGHEST PROPORTIONS OF NETWORK OUTAGES AND HIGH POPULATION DENSITY (COUNT)

(Calculated as a count of Facebook users located in areas which saw as outage on at least one day during the crisis time period.)

- Petite Anse, La Gonave(44)
- Boucan Guillaume, Belle-Anse (40)
- Bassin, les Gonaïves (38)
- Juanaria, Hinche (36)
- Bas Cap-Rogue, Jacmel (32)

Data Sources

Inset map based on: Facebook Data for Good, Network Coverage Data, 2021

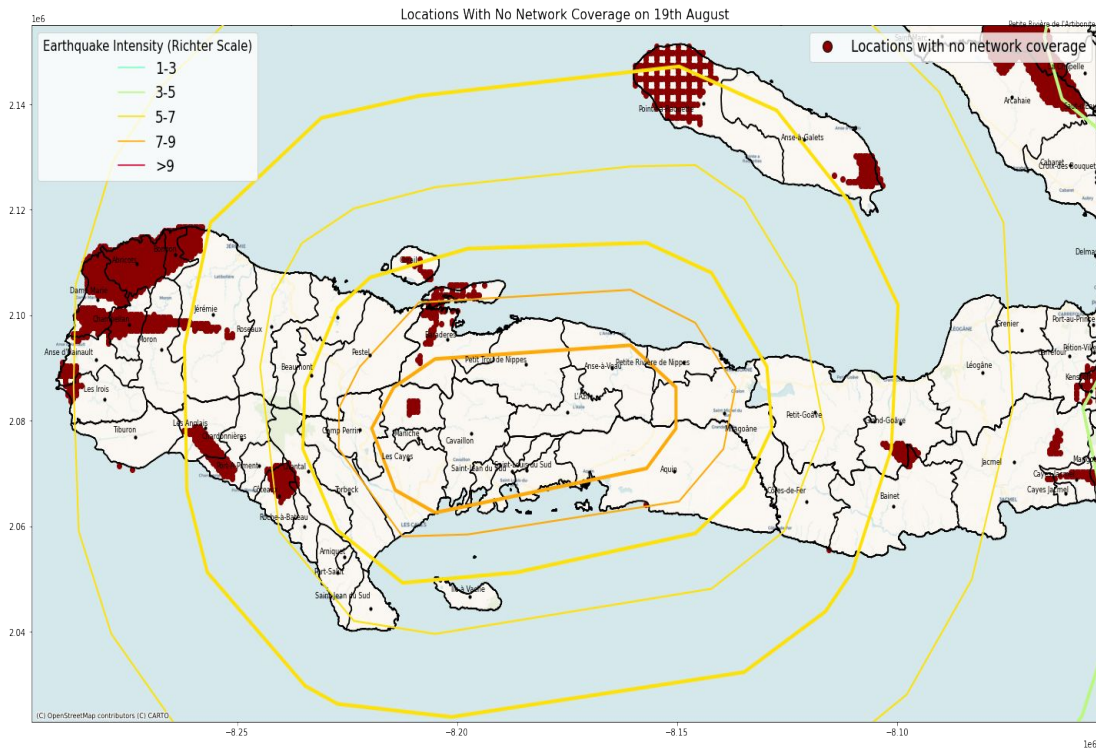
Note on the calculations: Change in **network coverage** is calculated according to the probability that Facebook users were able to connect to cellular data antennas located in the area of interest.

Basemap based on: Carto Voyager, 2021

Disaster Network Situation Report

Earthquake in Nippes, Haiti (19th August, 2021)

NETWORK COVERAGE MAP



LOCATIONS WITH HIGHEST PROPORTION OF NETWORK OUTAGES (%)

(Calculated as a percentage of grid cell tiles which saw an outage on at least one day during the crisis time period.)

- Petite Anse, La Gonave (86%)
- Fonds Rouge Torberck, Jèrèmie (53%)
- Acajou Bruler 1, Cerca La Source (50%)
- Grand Boucan, L'Anse-à-Veau (50%)
- Désarmes, Saint-Marc (36%)

LOCATIONS WITH HIGHEST PROPORTIONS OF NETWORK OUTAGES AND HIGH POPULATION DENSITY (COUNT)

(Calculated as a count of Facebook users located in areas which saw as outage on at least one day during the crisis time period.)

- Bois Neuf, Saint Marc (50)
- Petite Anse, La Gonave (44)
- Bassin, les Gonaïves (38)
- Juanaria, Hinche (36)
- Bas Cap-Rogue, Jacmel (32)

Data Sources

Inset map based on: Facebook Data for Good, Network Coverage Data, 2021

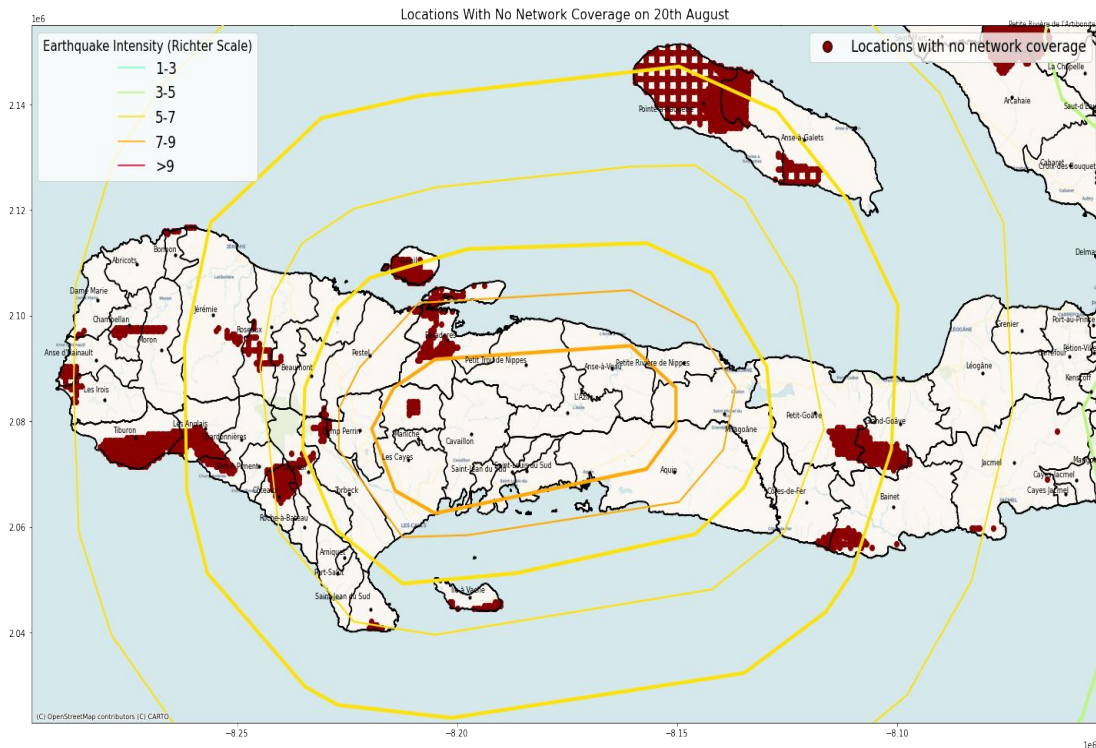
Note on the calculations: Change in **network coverage** is calculated according to the probability that Facebook users were able to connect to cellular data antennas located in the area of interest.

Basemap based on: Carto Voyager, 2021

Disaster Network Situation Report

Earthquake in Nippes, Haiti (20th August, 2021)

NETWORK COVERAGE MAP



LOCATIONS WITH HIGHEST PROPORTION OF NETWORK OUTAGES (%)

(Calculated as a percentage of grid cell tiles which saw an outage on at least one day during the crisis time period.)

- Grand Boucan, L'Anse-à-Veau (44%)
- Bois Neuf, Saint Marc (43%)
- Tête à Boeuf, Léogâne (25%)
- Boucan Guillaume, Belle-Anse (19%)
- Désarmes, Saint-Marc (18%)

LOCATIONS WITH HIGHEST PROPORTIONS OF NETWORK OUTAGES AND HIGH POPULATION DENSITY (COUNT)

(Calculated as a count of Facebook users located in areas which saw as outage on at least one day during the crisis time period.)

- Bois Neuf, Saint Marc (50)
- Boucan Guillaume, Belle-Anse (39)
- Bassin, les Gonaïves (38)
- Juanaria, Hinche (36)
- Ravine Séche, Léogâne (35)

Data Sources

Inset map based on: Facebook Data for Good, Network Coverage Data, 2021

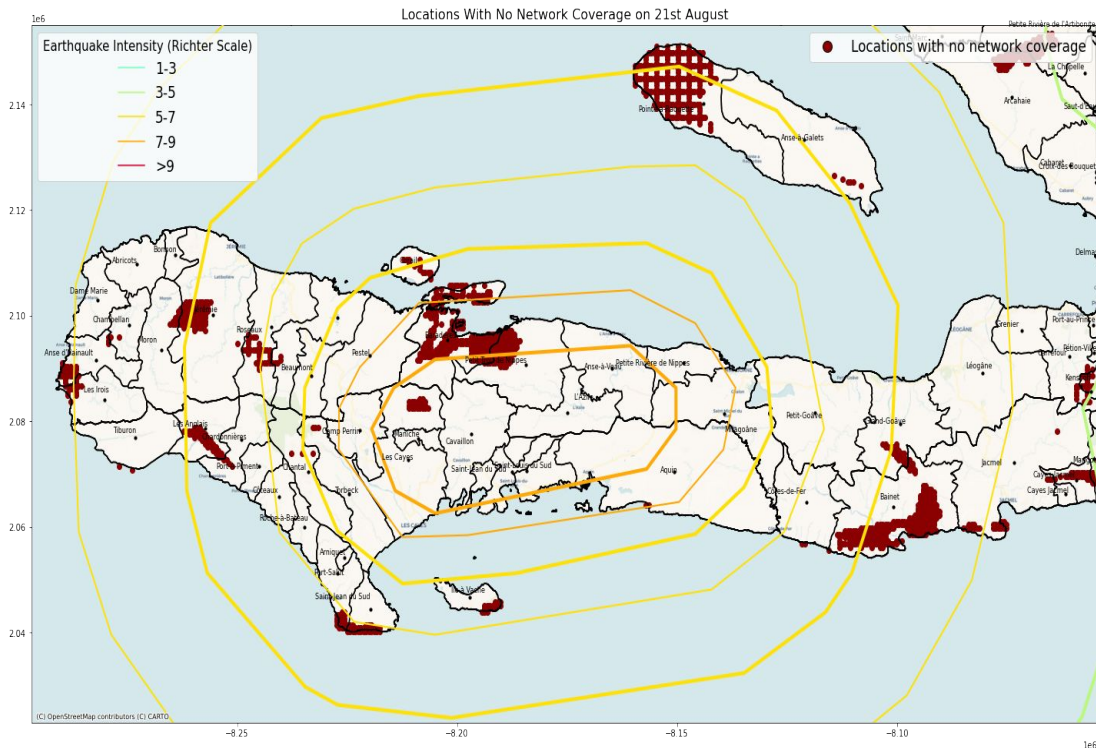
Note on the calculations: Change in **network coverage** is calculated according to the probability that Facebook users were able to connect to cellular data antennas located in the area of interest.

Basemap based on: Carto Voyager, 2021

Disaster Network Situation Report

Earthquake in Nippes, Haiti (21st August, 2021)

NETWORK COVERAGE MAP



LOCATIONS WITH HIGHEST PROPORTION OF NETWORK OUTAGES (%)

(Calculated as a percentage of grid cell tiles which saw an outage on at least one day during the crisis time period.)

- Grand Boucan, L'Anse-à-Veau (60%)
- Gaillard, Jacmel (21%)
- Désarmes, Saint-Marc (15%)
- Rivière Mancelle, L'Anse-à-Veau (11%)
- Claudine, Le Trou-du-Nord (10%)

LOCATIONS WITH HIGHEST PROPORTIONS OF NETWORK OUTAGES AND HIGH POPULATION DENSITY (COUNT)

(Calculated as a count of Facebook users located in areas which saw as outage on at least one day during the crisis time period.)

- Petite Anse, La Gonave (44)
- Bassin, les Gonaïves (38)
- Bas Cap-Rogue, Jacmel (32)
- Grand Boucan, L'Anse-à-Veau (30)
- Roucou, Le Trou-du-Nord (20)

Data Sources

Inset map based on: Facebook Data for Good, Network Coverage Data, 2021

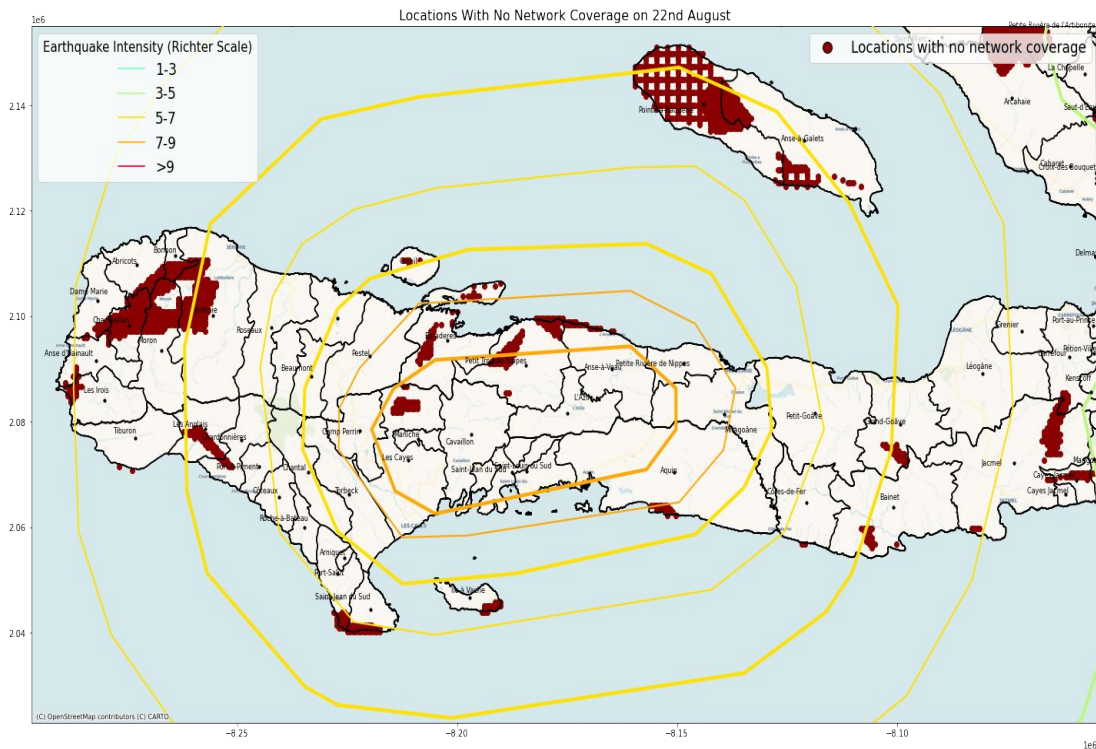
Note on the calculations: Change in **network coverage** is calculated according to the probability that Facebook users were able to connect to cellular data antennas located in the area of interest.

Basemap based on: Carto Voyager, 2021

Disaster Network Situation Report

Earthquake in Nippes, Haiti (22nd August, 2021)

NETWORK COVERAGE MAP



LOCATIONS WITH HIGHEST PROPORTION OF NETWORK OUTAGES (%)

(Calculated as a percentage of grid cell tiles which saw an outage on at least one day during the crisis time period.)

- Bois Neuf, Saint Marc (43%)
- Marfranc, Jèrémie (36%)
- Acajou Bruler 1, Cerca La Source (29%)
- Savannette, Borgne (23%)
- L'Attalaye, Marmelade (22%)

LOCATIONS WITH HIGHEST PROPORTIONS OF NETWORK OUTAGES AND HIGH POPULATION DENSITY (COUNT)

(Calculated as a count of Facebook users located in areas which saw as outage on at least one day during the crisis time period.)

- Bois Neuf, Saint Marc (50)
- Petite Anse, La Gonave (44)
- Boucan Guillaume, Belle-Anse (39)
- Bassin, les Gonaïves (38)
- Juanaria, Hinche (36)

Data Sources

Inset map based on: Facebook Data for Good, Network Coverage Data, 2021

Note on the calculations: Change in **network coverage** is calculated according to the probability that Facebook users were able to connect to cellular data antennas located in the area of interest.

Basemap based on: Carto Voyager, 2021