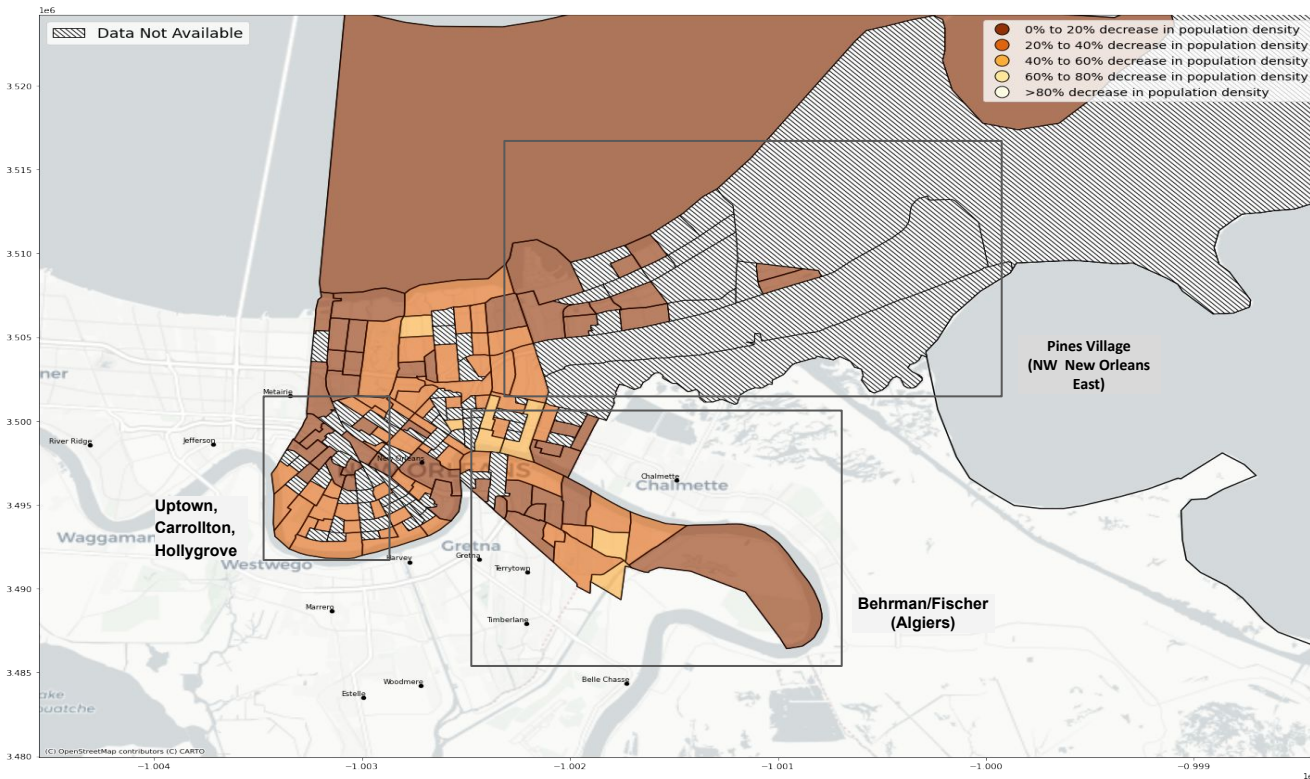


SUMMARY: Hurricane Ida, a Category 4 hurricane, made landfall early on Sunday, 29th August about 25 miles west of New Orleans with wind speeds close to 150 mph.

POPULATION DENSITY CHANGES



Data Sources

- Inset map based on: Facebook Data for Good, Population Density Changes Data, 2021
- American Community Survey, 5 year estimates, 2018
- Note on the calculations: Change in population density is calculated according to the change in the proportion of Facebook users relative to a baseline measure from 90 days prior to the onset of the crisis.
- Basemap based on: Carto Positron, 2021

Limitations

- Census tract data from 2018.
- Aligning centroid tiles with census tract data could result in errors of over and under estimation of population changes in select areas. Future heat maps may help differentiate these areas
- This reflects changes for a 24 hour period ending on Sept 8th, midnight. Future maps may reflect changes over a longer period and/or more recent data

Creation Date - 10th Sept

Contact/Feedback - ASchroeder@directrelief.org /

jennifer-chan@northwestern.edu

CrisisReady - <https://crisisready.io>

Population Change Situation Report

Hurricane Ida: Orleans Parish (7 September - 8 September, 2021) Tables

SUMMARY: Hurricane Ida, a Category 4 hurricane, made landfall early on Sunday, 29th August about 25 miles west of New Orleans with wind speeds close to 150 mph.

Orleans Parish Planning Districts that <u>May be Decreasing</u>			
7th-8th September, 2021			
Select planning districts derived from Facebook user population density change data		2018 American Community Survey	
Planning District Name	Mean % Change**	Total Census Population	% of Population Below Poverty Line
Algiers	-26.1	46138	24.1
CBD, Warehouse District	-10.8	2859	19.2
Central City - Garden District	-26.1	14380	28.9
Gentilly	-27.1	29012	19.0
Lakeview	-16.3	19665	5.9
Lower Ninth Ward - Holy Cross	-18.6	6137	35.8
Marigny, Bywater, St. Claude, St. Roch, Desire	-39.5	11624	32.0
Mid-City	-26.0	29590	28.5
New Orleans East	-6.5	8707	35.2
Uptown and Carrollton	-23.7	43196	16.3
Vieux Carre	-39.5	1246	9.3
** Do not multiply FB population mean % change by census population to calculate actual population			

Data Sources

- Inset map based on: Facebook Data for Good, Population Density Changes Data, 2021
- American Community Survey, 5 year estimates, 2018
- Note on the calculations: Change in population density is calculated according to the change in the proportion of Facebook users relative to a baseline measure from 90 days prior to the onset of the crisis.
- Basemap based on: Carto Positron, 2021

Limitations

- Census tract data from 2018.
- Aligning centroid tiles with census tract data could result in errors of over and under estimation of population changes in select areas. Future heat maps may help differentiate these areas
- This reflects changes for a 24 hour period ending on Sept 8th, midnight. Future maps may reflect changes over a longer period and/or more recent data

Creation Date - 10th Sept

Contact/Feedback - ASchroeder@directrelief.org / jennifer-chan@northwestern.edu

CrisisReady - <https://crisisready.io>

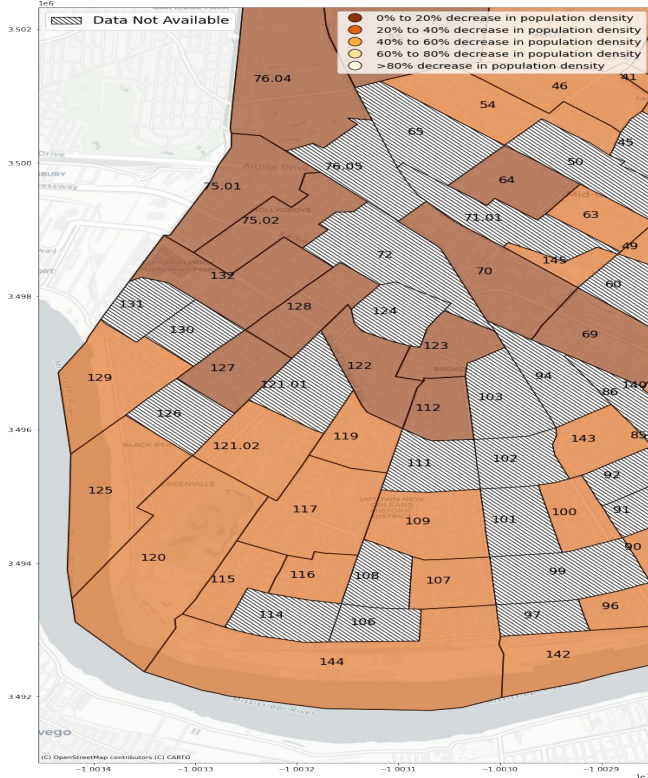
Population Change Situation Report

Hurricane Ida: Orleans Parish (7 September - 8 September, 2021)

SUMMARY: Hurricane Ida, a Category 4 hurricane, made landfall early on Sunday, 29th August about 25 miles west of New Orleans with wind speeds close to 150 mph.

Uptown/Carrollton/Hollygrove

POPULATION DENSITY CHANGES BY CENSUS TRACT NUMBER



Orleans Parish Planning Districts & Census Tract with Populations that May be Decreasing					
7th-8th September, 2021					
Select planning districts derived from Facebook user population density change data				2018 American Community Survey	
Planning District Name	Neighborhood Name	Census Tract	Mean % Change**	Total Census Population	% of Population Below Poverty Line
Central City - Garden District	Central City - Magnolia	140	-24.9	1893	57.95
		143	-21.9	1857	59.61
	East Riverside	96	-31.5	1548	10.72
	Garden District	90	-32.0	2029	7.59
	Irish Channel	142	-29.1	1647	10.5
Lakeview	Milan	100	-30.3	1525	31.87
	City Park	46	-30.5	2896	5.84
		9800	-22.8	10	20
	Lakewood	76.04	-17.4	1900	1.37
	Navarre	55	-17.3	2849	8.32
Mid-City	B. W. Cooper Housing Dev	69	-17.5	1025	52.29
	Bayou St. John	41	-30.1	1516	8.71
	Fairgrounds - Broad	37.01	-27.7	1936	13.27
	Gert Town - Zion City	70	-18.8	2153	11.01
	Mid-City	145	-24.4	2516	0
		54	-22.5	1742	13.26
		63	-21.8	1678	31.17
		64	-19.4	2233	5.78
	Tulane - Gravier	49	-29.0	1602	44.76
Uptown and Carrollton	Audubon - University	115	-36.2	1289	5.82
		116	-35.1	1491	2.62
		117	-36.6	3082	6.52
		119	-30.7	1755	28.95
		120	-29.9	1387	6.2
		121.02	-29.7	4185	10.68
	Black Pearl	125	-30.0	1801	13.66
	Broadmoor	112	-19.6	1573	12.71
		123	-13.2	2167	16.71
	East Carrollton	127	-18.4	2439	14.51
	Hollygrove	75.01	-8.3	2719	25.82
		75.02	-8.6	3591	48.9
	Leonidas - West Carrollton	129	-22.3	1441	23.32
		132	-10.6	2956	22.29
	Marlyville - Fontainebleau	122	-15.9	2339	12.36
		128	-11.9	2233	14.91
	Uptown	107	-33.4	1883	14.18
		109	-32.5	3142	15.28
	West Riverside	144	-26.8	1723	14.92

** Do not multiply FB population mean % change by census population to calculate actual population

Population Change Situation Report

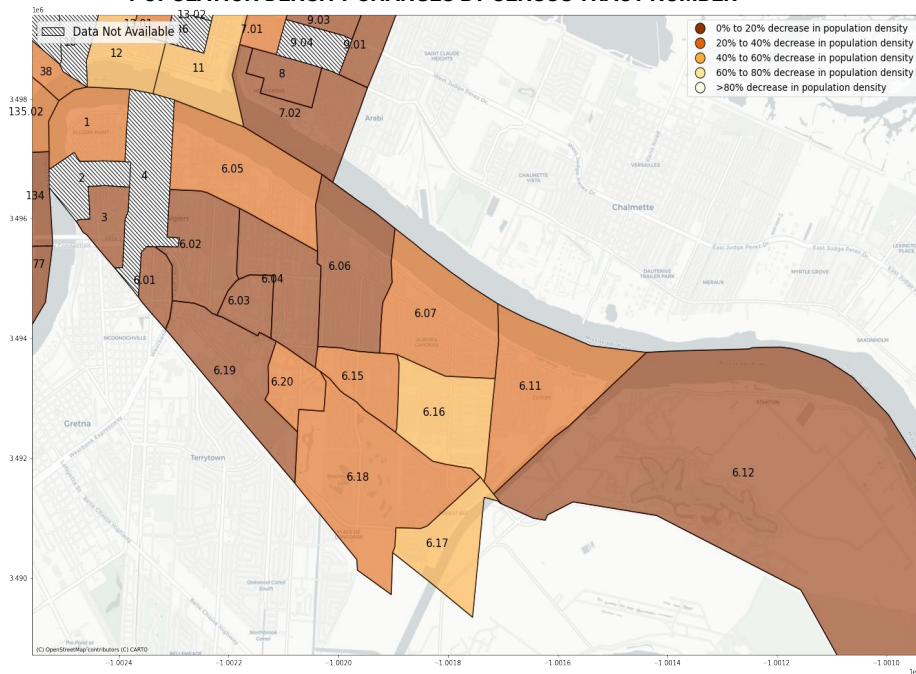
Hurricane Ida: Orleans Parish (7 September - 8 September, 2021)

SUMMARY: Hurricane Ida, a Category 4 hurricane, made landfall early on Sunday, 29th August about 25 miles west of New Orleans with wind speeds close to 150 mph.

Behrman/Fischer

POPULATION DENSITY CHANGES BY CENSUS TRACT NUMBER

POPULATION DENSITY CHANGES BY CENSUS TRACT NUMBER



Orleans Parish Planning Districts & Census Tract with Populations that May be Decreasing					
7th-8th September, 2021					
Select planning districts derived from Facebook user population density change data				2018 American Community Survey	
Planning District Name	Neighborhood Name	Census Tract	Mean % Change**	Total Census Population	% of Population Below Poverty Line
Algiers	Algiers Naval Station	6.05	-24.7	2297	25.47
	Algiers Point	1	-25.0	2735	9.03
	Aurora - Walnut Bend - Huntlee	6.06	-15.6	4523	9.97
		6.07	-27.8	4733	7.33
		6.15	-22.7	4313	22.07
		6.16	-41.1	4392	19.06
	Behrman	6.02	-18.3	2328	19.54
		6.03	-7.2	936	45.73
		6.04	-14.3	4163	30.53
	Fischer Housing Dev	6.01	-14.8	816	58.7
CBD, Warehouse District	River Park - Cut Off - Algiers Lower Coast	6.11	-39.1	5144	23.06
	Tall Timbers - Brechtel	6.17	-56.2	5366	31.42
		6.18	-32.3	4392	11.54
	Central Business District	134	-10.8	2859	19.2
Central City - Garden District	St. Thomas Area - Lower Garden District	77	-15.2	2302	15.03
Lower Ninth Ward - Holy Cross	Holy Cross	7.02	-18.9	1877	50.72
		8	-9.9	1752	28.2
	Lower Ninth Ward	7.01	-33.5	907	45.2
		9.01	-10.8	901	14.76
Marigny, Bywater, St. Claude, St. Roch, Desire		9.03	-19.8	700	40.14
	Bywater	11	-41.4	1808	21.57
		12	-41.9	1701	14.4
	St. Claude	13.01	-38.9	1936	28.87
Vieux Carre	Vieux Carre	38	-39.5	1246	9.31

** Do not multiply FB population mean % change by census population to calculate actual population

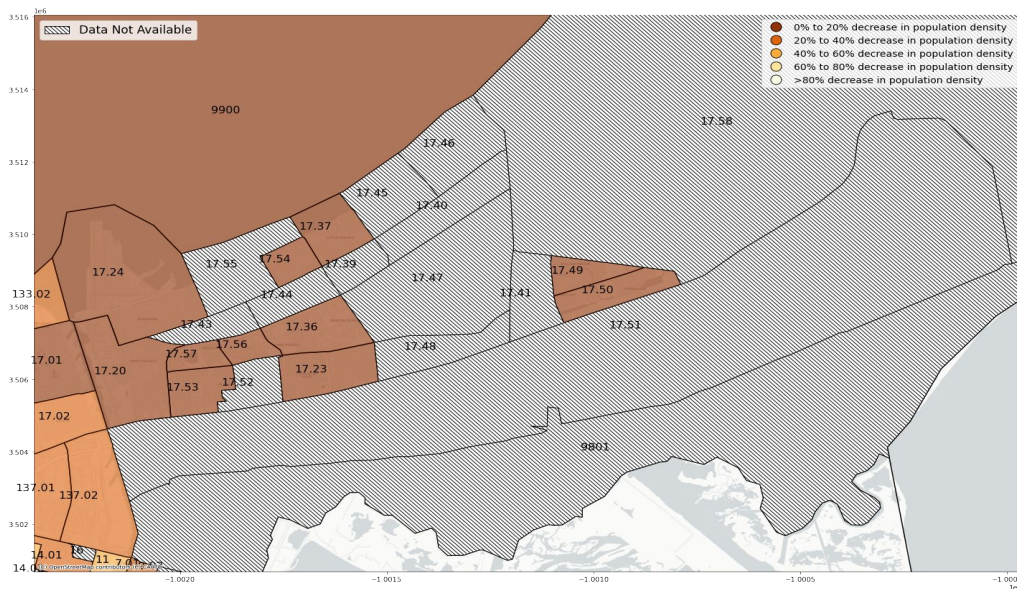
Population Change Situation Report

Hurricane Ida: Orleans Parish (7 September - 8 September, 2021)

SUMMARY: Hurricane Ida, a Category 4 hurricane, made landfall early on Sunday, 29th August about 25 miles west of New Orleans with wind speeds close to 150 mph.

POPULATION DENSITY CHANGES BY CENSUS TRACT NUMBER

Pines Village, North West area of New Orleans East



Orleans Parish Planning Districts & Census Tract with Populations that <u>May</u> be Decreasing					
7th-8th September, 2021					
Select planning districts derived from Facebook user population density change data				2018 American Community Survey	
Planning District Name	Neighborhood Name	Census Tract	Mean % Change**	Total Census Population	% of Population Below Poverty Line
Gentilly	Gentilly Woods	17.02	-30.8	3544	16.06
	Lake Terrace - Lake Oaks	133.02	-32.7	2141	11.82
	Pontchartrain Park	17.01	-14.6	2255	26.43
Lower Ninth Ward - Holy Cross	Lower Ninth Ward	7.01	-33.5	907	45.2
Marigny, Bywater, St. Claude, St. Roch, Desire	Bywater	11	-41.4	1808	21.57
	Florida Area	14.01	-38.9	1420	28.45
New Orleans East	Edgeland - Little Woods	17.37	-6.6	3478	38.5
	Pines Village	17.2	-4.3	3214	34.66
	West Lake Forest	17.36	-8.6	2015	32.36

** Do not multiply FB population mean % change by census population to calculate actual population