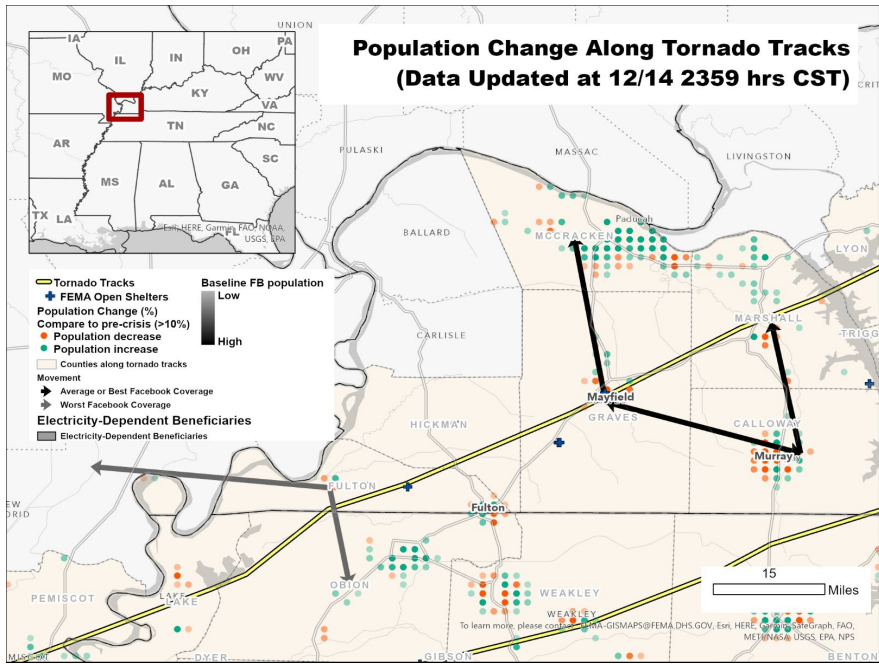


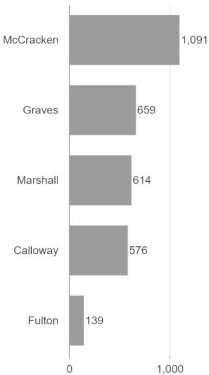
# Kentucky Tornado Situation Report

## Central United States Tornado: Kentucky (14 December, 2021)

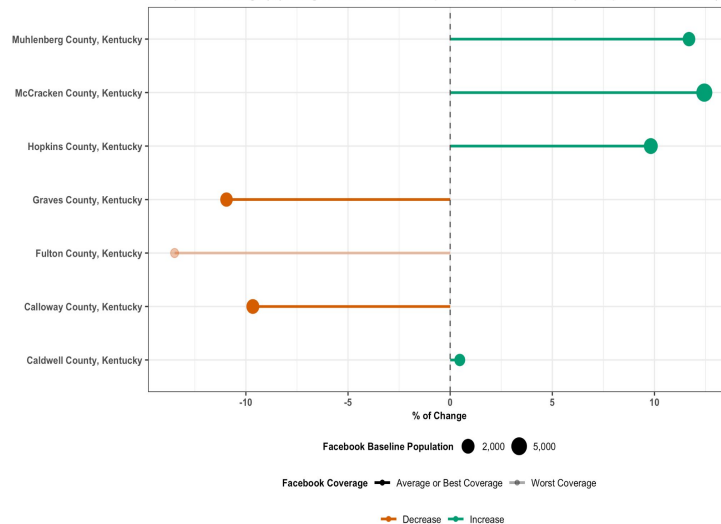
**SUMMARY:** On Friday, December 10, 2021, a historic, long-track tornado entered western Kentucky and moved northeast from 9:00 PM - 11:20 PM CST, producing widespread destruction in Graves, Caldwell, Fulton, Hopkins, Marshall, Muhlenberg, Taylor, and Warren counties. The visualizations below show the changes in population densities along the tornado's path in the aftermath of the disaster on Tuesday, December 14, 2021.



Electricity-dependent Medicare beneficiaries living in each county



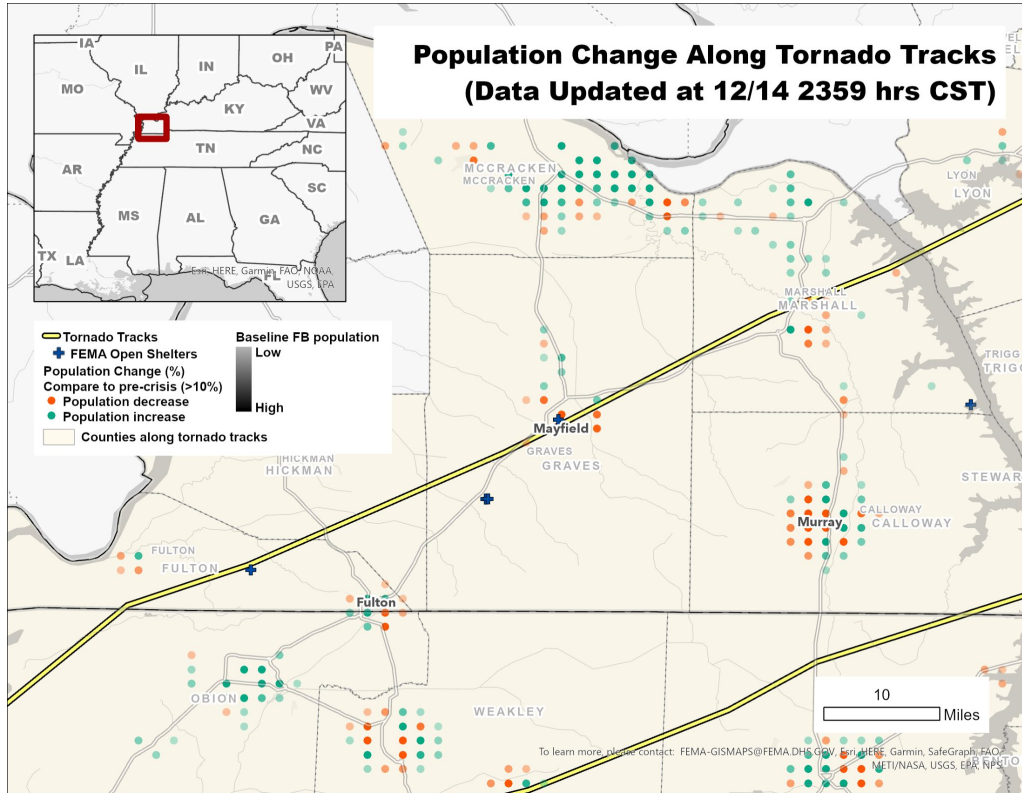
Population Change (%) Along Tornado Tracks Compared to Pre-Crisis levels (Data Updated - 12/14/2021)



# Kentucky Tornado Situation Report

## Central United States Tornado: Kentucky (14 December, 2021)

**SUMMARY:** On Friday, December 10, 2021, a historic, long-track tornado entered western Kentucky and moved northeast, producing significant destruction in Mayfield, Kentucky. The visualization below shows the percentage decrease in Mayfield's population density, compared to its pre-disaster population density, in the aftermath of the tornado on Tuesday, December 14, 2021.



### Data Sources

- Inset map based on: Facebook Data for Good, Population Density Changes Data, 2021
- Note on the calculations: Change in population density is calculated according to the change in the proportion of Facebook users relative to a baseline measure from 90 days prior to the onset of the crisis.
- Basemap based on: ESRI, 2021

### Limitations

- This reflects changes for a 24 hour period ending on December 14th, midnight. Future maps may reflect changes over a longer period and/or more recent data

**Creation Date** - 14th December

**Contact/Feedback** - [ASchroeder@directrelief.org](mailto:ASchroeder@directrelief.org) /

[jennifer-chan@northwestern.edu](mailto:jennifer-chan@northwestern.edu)

**CrisisReady** - <https://crisisready.io>