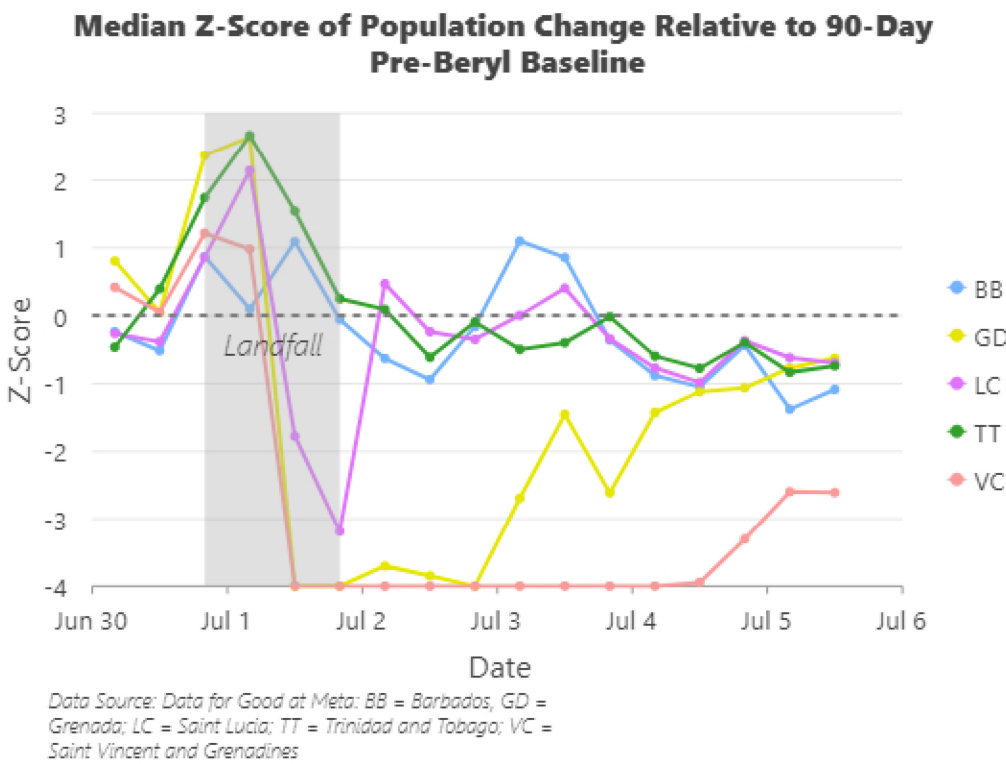
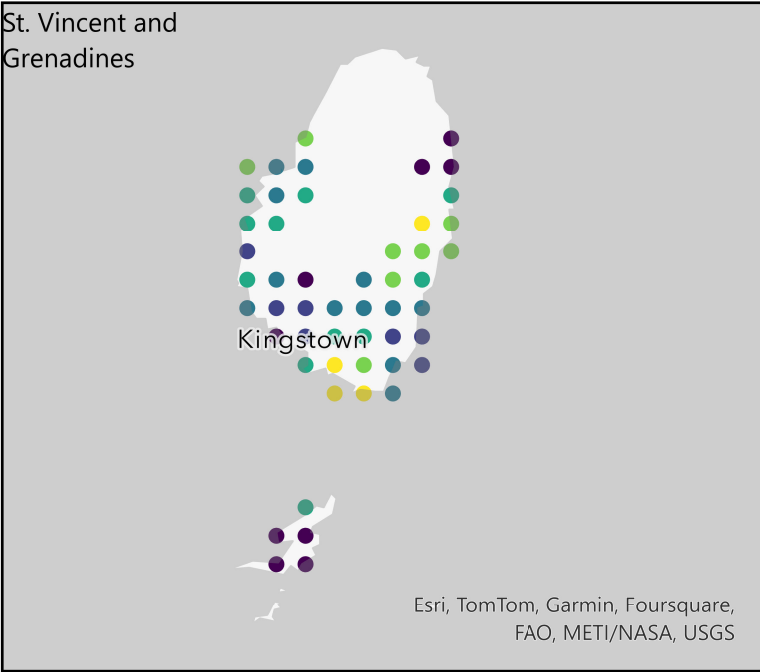
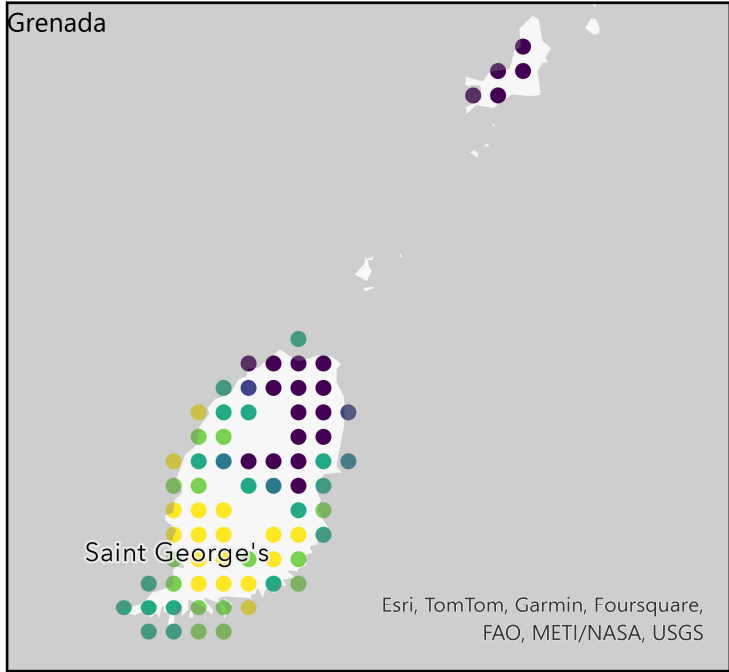
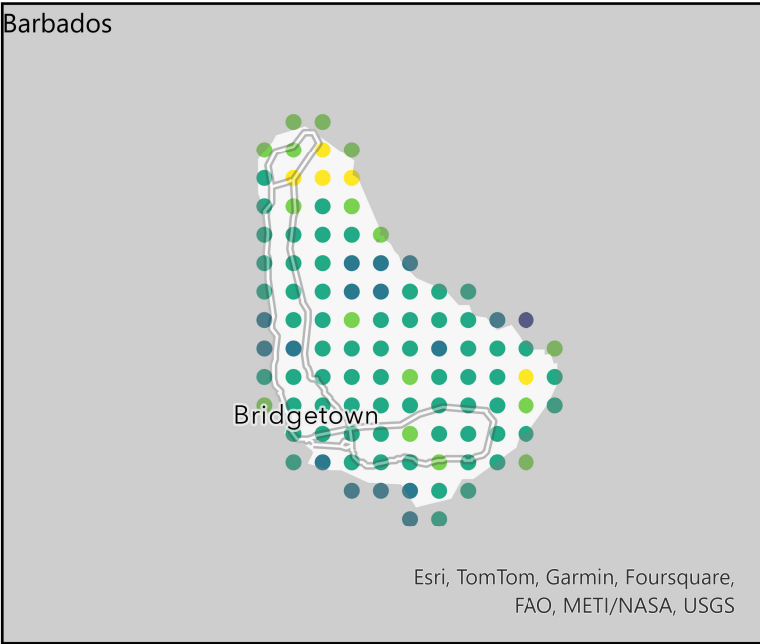
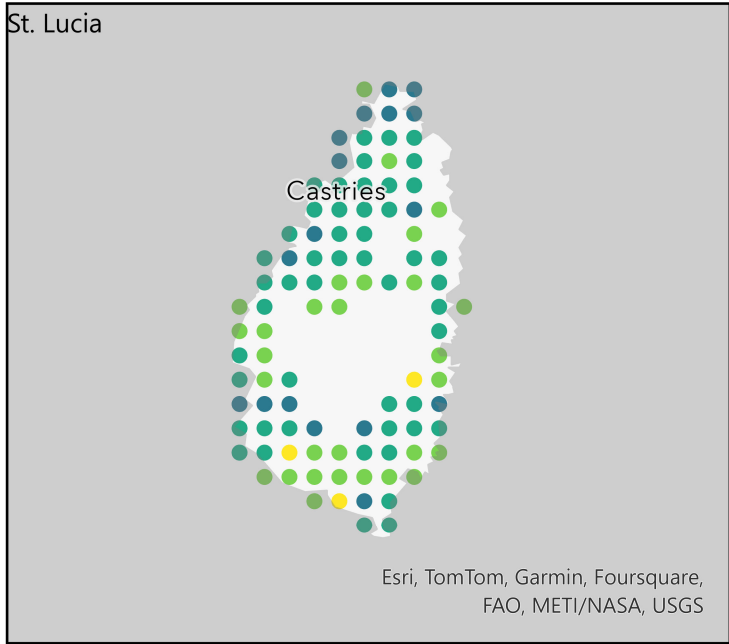


Hurricane Beryl Population Dynamics on the Windward Islands: Grenada, St. Vincent and Grenadines, St. Lucia, and Barbados

Change in Facebook User Population Relative to 90-Day Pre-Landfall Baseline - July 5th, 2024



Immediately prior to the landfall of Hurricane Beryl every windward island saw a significant increase in Facebook user population relative to the pre-storm baseline, most likely attributable to a significant increase in the rate of Facebook application usage combined with increasing rates of movement. Post-landfall, St Lucia, Grenada, and St. Vincent saw very large decreases, most likely attributable to power and network outages.

Change in Z-Score of FB Population
z_score

- > 1.5 Std. Dev.
- 0.50 - 1.5 Std. Dev.
- 0.50 - 0.50 Std. Dev.
- 1.5 - -0.50 Std. Dev.
- 2.5 - -1.5 Std. Dev.
- < -2.5 Std. Dev.

As of July 5th, urban centers on each island saw significant rates of population and activity increase over 1.5 standard deviations, particularly the cities of St. George on Grenada and Kingstown on St. Vincent. Each of these cities hosts the majority of sheltered and displaced population.

CrisisReady is a collaborative research and response platform co-directed by Direct Relief and Harvard Data Science Initiative.