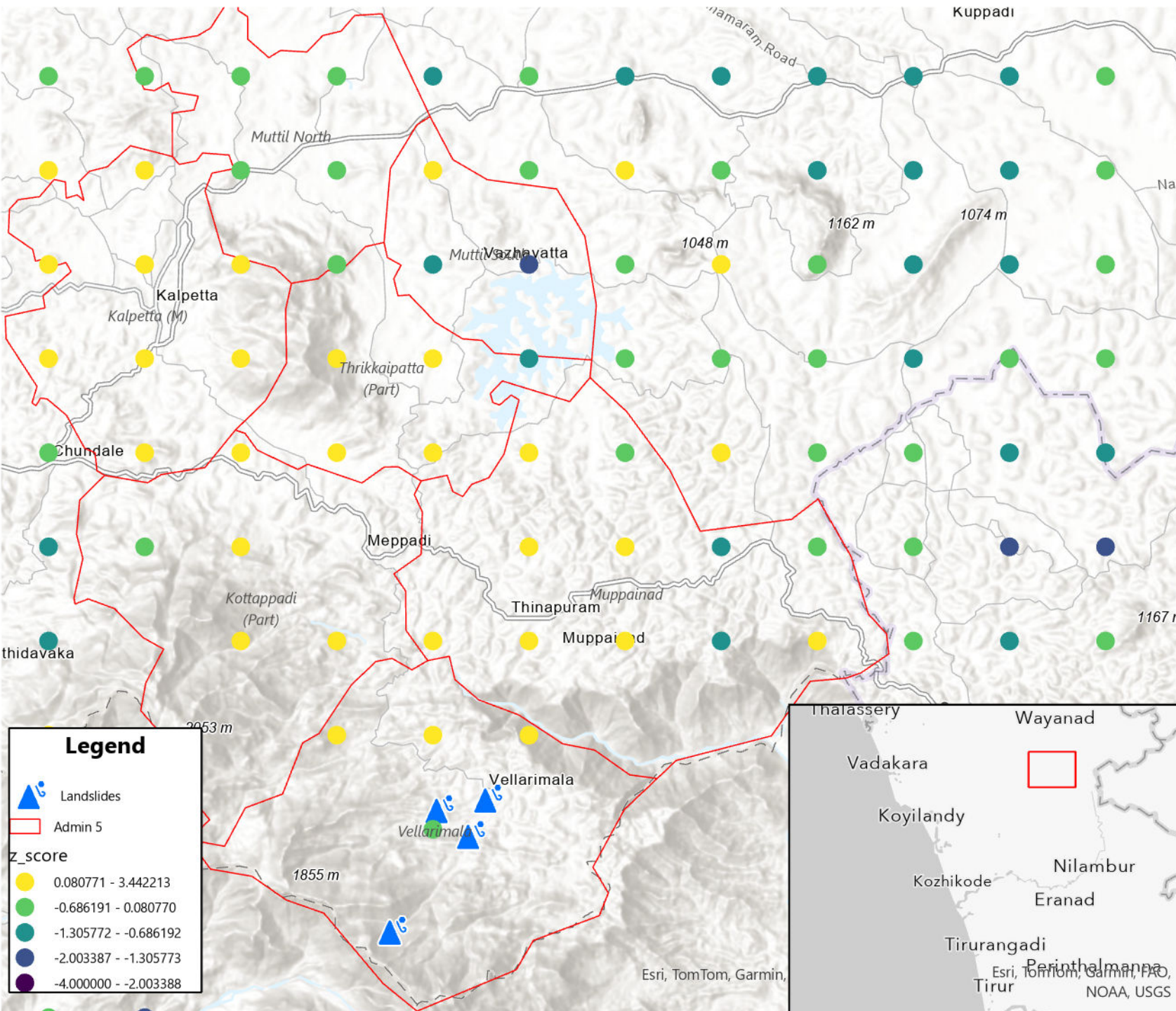


Landslides in Kerala

Population Density Change Relative to 90-Day Pre-Event Baseline | Map represents population as of 8am local time on August 7th.
July 30 to August 7th, 2024



Following devastating landslides overnight on July 30th due to heavy rainfall in the Wayanad district of Kerala, India at least 413 people have been killed and nearly 200 are still reported missing. Thousands have been displaced to nearby areas.

Based on data from Data for Good at Meta, as of the evening of August 7th the population of the Vellarimala area which was principally affected by the landslides remains significantly below the pre-event 90 day baseline, but daytime population in this area has increased to over 2 standard deviations above baseline, which on average represents more than a 40% increase. Daily variances are likely tied to the relief effort.

Kottappadi, Kalpetta, Thrikkaipatta, and Muppainad remain above baseline by a range of 1 to 2 standard deviations relative to baseline, representing a range of 5% to 35%.

The areas of Muttill North and South are slightly above baseline at night and slight below during the day. These ranges represent areas of minimal change in population.

Change in Facebook User Population Percentage Difference Relative to 90-Day Pre-Event Baseline

