

Park Fire Situation Report for Aug 3, 2024 at 19:00 EDT

Data last updated on Aug 5, 2024 at 00:00 EDT

01 Movement

02 MobilityMatrix

03 Vulnerability

Summary

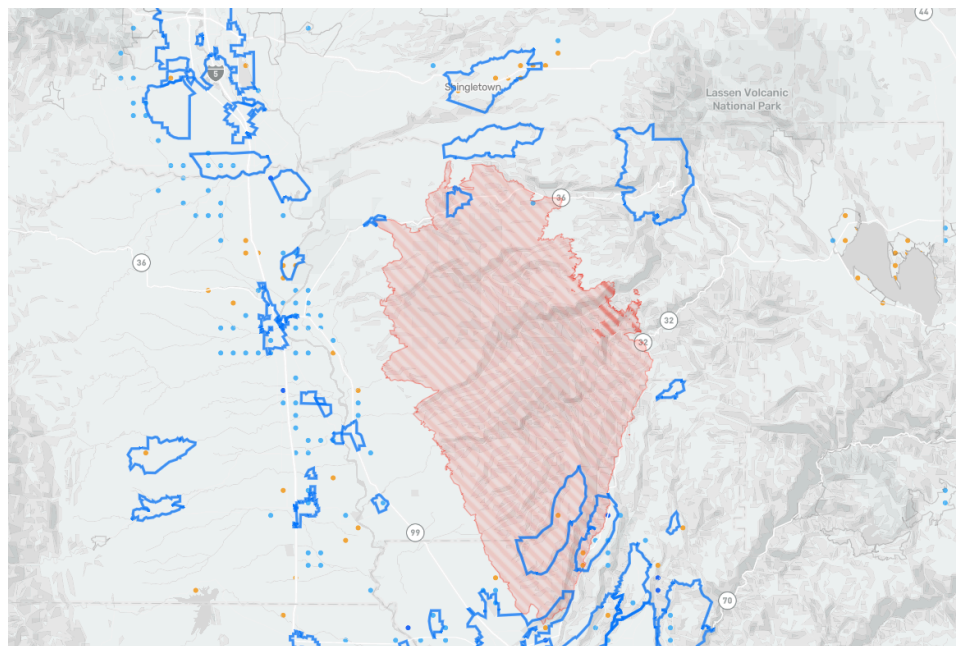
As of Sunday, August 4th the Park Fire near the city of Chico had grown to over 400,000 acres. It is now the 4th largest fire in California history measured by acres burned. According to CalFire the blaze is now considered 35% contained. Four evacuation centers remain open, in Los Molinos, Red Bluff, and Chico.

Based on data from Data for Good at Meta, population dynamics have nearly returned to normal across the affected region. The town of Vina, which had seen significant reductions in population density since the 28th of July, particularly at night, on Saturday August 3rd saw a huge increase in percentage terms at 36% above the pre-event baseline. Likewise, the towns of Shingletown, Forest Ranch, and Cohasset, all of which have been under evacuation orders, saw population return nearly to baseline levels as of Saturday evening.

Throughout this area the Facebook user base with location services is considered reasonably representative of the general population, with a total sample size of 15.2% and an R2 correlation value between Facebook users and the general Census population of 0.96.

MOVEMENT

% Pop. Density Change on Aug 3, 2024 at 19:00 EDT



Facebook Mobility Data

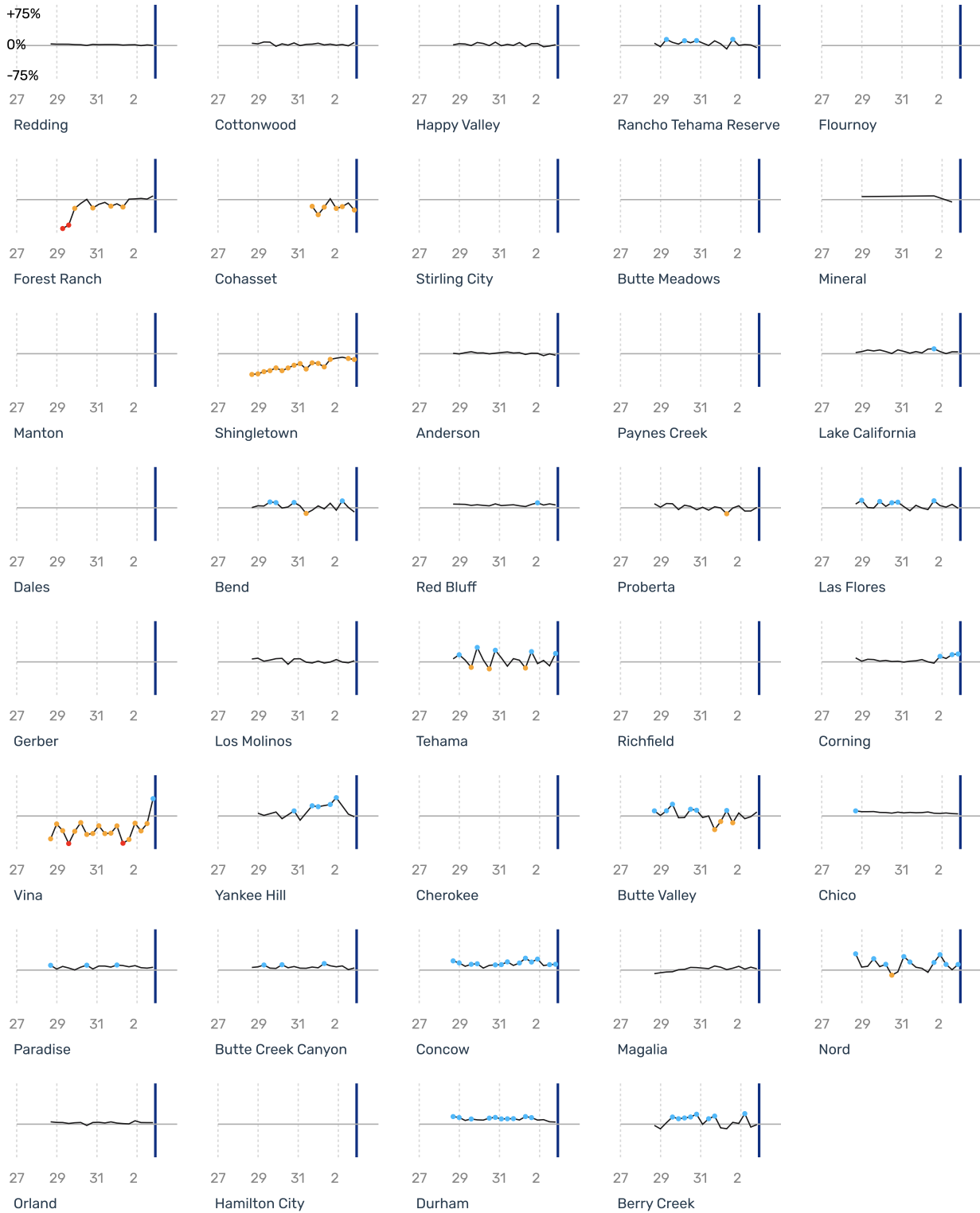
- -50%+
- -50 to -10%
- 10 to 50%
- 50%+

% Pop. Density Change on Aug 3, 2024 at 19:00 EDT with place selections.

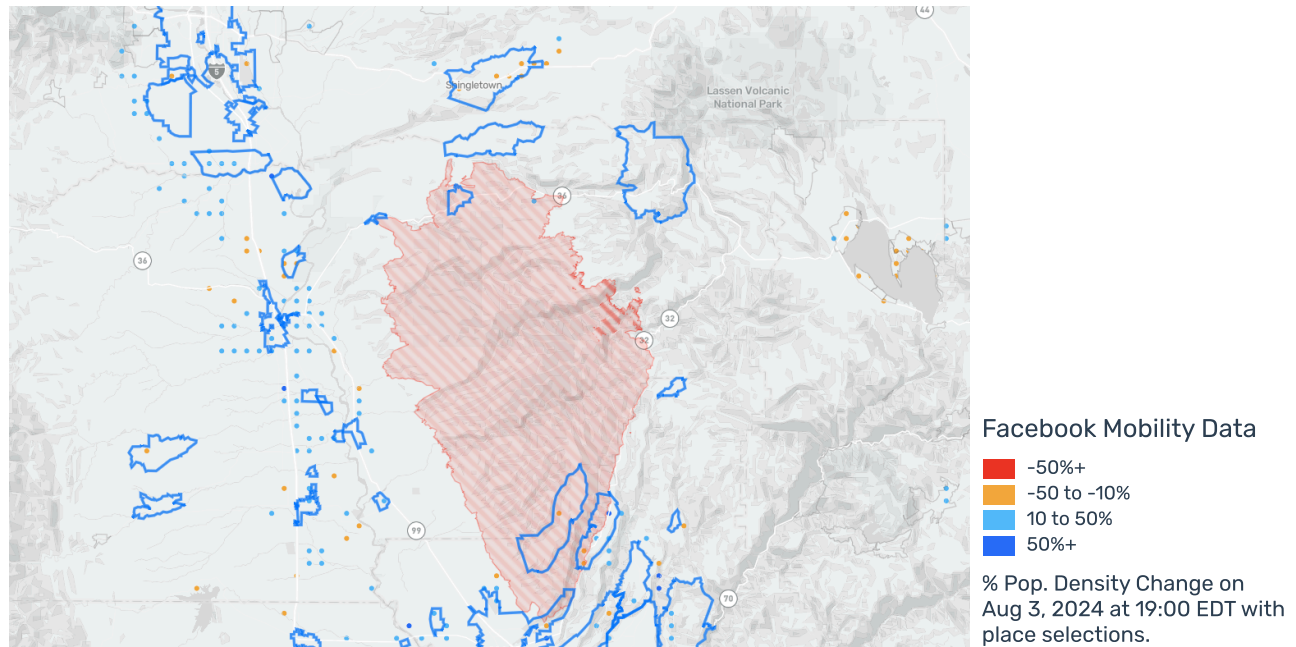
Population Density on Aug 3, 2024 at 19:00 EDT

Location	Baseline Pop.	Current Crisis Pop.	Pop. Density vs. Baseline ▼	Confidence Level
Tehama	11568	12298	6%	N/A
Glenn	4501	4657	3%	N/A
Butte	34025	35185	3%	N/A
Shasta	31078	31168	0%	N/A
Vina	24	33	36%	N/A
Tehama	32	38	18%	N/A
Corning	252	294	17%	N/A
Concow	122	137	12%	N/A
Nord	22	25	12%	N/A
Butte Valley	98	106	8%	N/A
Forest Ranch	129	139	8%	N/A
Cottonwood	687	731	6%	N/A
Red Bluff	1531	1622	6%	N/A
Paradise	1417	1500	6%	N/A
Chico	13292	13887	4%	N/A
Durham	1102	1151	4%	N/A
Butte Creek Canyon	170	178	4%	N/A
Lake California	459	477	4%	N/A
Los Molinos	212	217	2%	N/A
Happy Valley	693	705	2%	N/A
Redding	16740	16797	0%	N/A
Rancho Tehama Reserve	146	140	−4%	N/A
Flournoy	N/A	N/A	N/A	N/A
Proberta	35	35	1%	N/A
Las Flores	49	49	−1%	N/A
Anderson	1311	1270	−3%	N/A
Bend	57	52	−9%	N/A
Cohasset	38	30	−22%	N/A
Stirling City	N/A	N/A	N/A	N/A
Butte Meadows	N/A	N/A	N/A	N/A
Mineral	N/A	N/A	N/A	N/A
Manton	N/A	N/A	N/A	N/A
Shingletown	342	300	−12%	N/A
Paynes Creek	N/A	N/A	N/A	N/A
Dales	N/A	N/A	N/A	N/A
Gerber	N/A	N/A	N/A	N/A
Richfield	N/A	N/A	N/A	N/A
Orland	778	803	3%	N/A
Magalia	1227	1260	3%	N/A
Yankee Hill	12	12	−2%	N/A
Cherokee	N/A	N/A	N/A	N/A
Hamilton City	N/A	N/A	N/A	N/A
Berry Creek	33	33	−1%	N/A

% Pop. Density Change Over Time



MOBILITY MATRIX

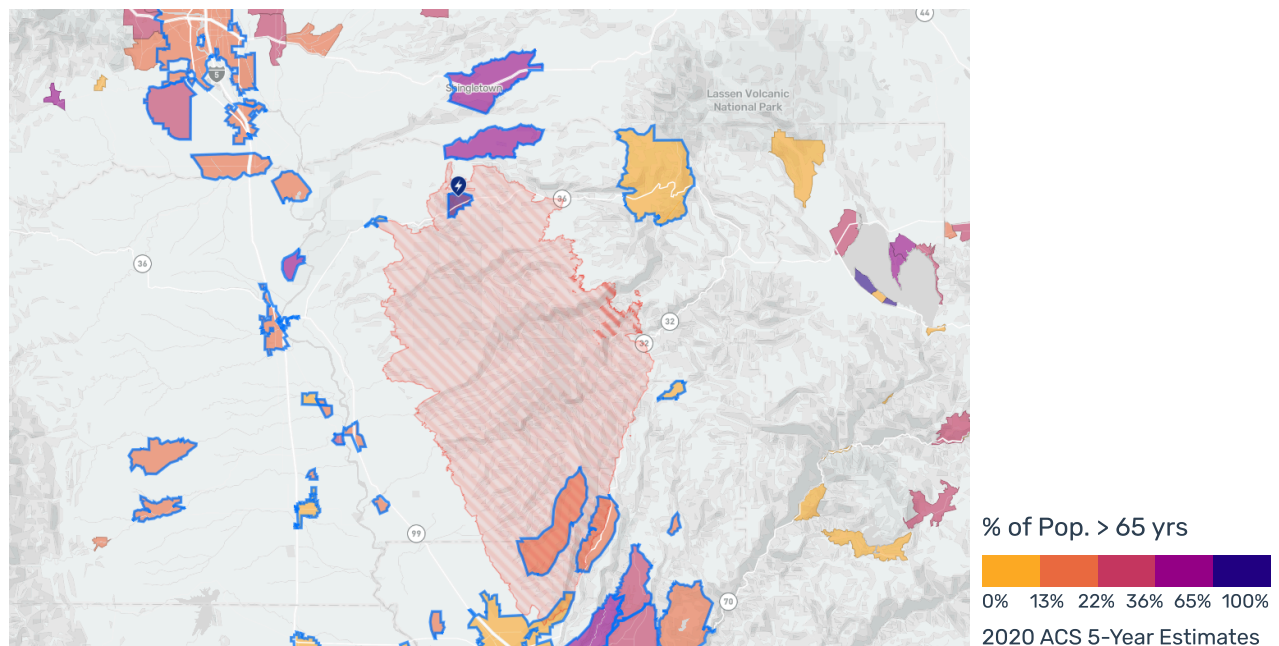


Summarized Origin-Destination Matrix until Aug 3, 2024 at 19:00 EDT

Origin - Destination	Baseline Pop.	Current Crisis Pop.	Pop. Density vs. Baseline ▼
Tehama - Tehama	116	157	36%
Butte - Butte	1125	1306	16%
Shasta - Shasta	570	655	15%
Glenn - Glenn	118	116	-2%
Chico - Chico	888	1035	17%
Redding - Redding	570	655	15%
Orland - Orland	56	51	-9%

VULNERABILITY

Pop. > 65 yrs on Aug 3, 2024 at 19:00 EDT



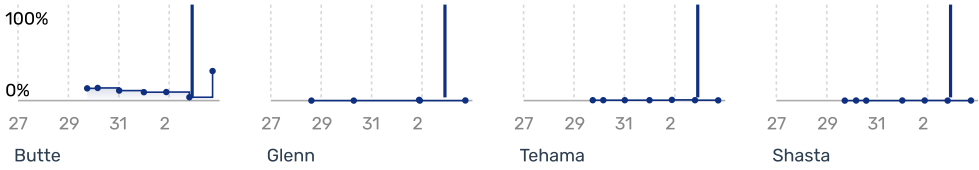
Demographics

Location	Total Pop.	Pop. > 65 yrs	% of Pop. > 65 yrs ▼	% of Women Pop.	% of Children Under 5	% of Pop. Below Poverty Level	Num. Customers Without Power	DME Users	DME Users / 100K Pop.
Shasta	179,267	36,923	21%	N/A	N/A	15%	N/A	3058	0.0306
Tehama	64,176	12,707	20%	N/A	N/A	19%	205	921	0.0092
Butte	223,344	40,663	18%	N/A	N/A	18%	271	2701	0.0270
Glenn	28,060	4,593	16%	N/A	N/A	15%	N/A	421	0.0042
Paynes Creek	47	33	70%	N/A	N/A	0%	84	N/A	N/A
Bend	425	268	63%	N/A	N/A	29%	N/A	N/A	N/A
Manton	331	203	61%	N/A	N/A	18%	58	N/A	N/A
Butte Creek Canyon	677	355	52%	N/A	N/A	6%	N/A	N/A	N/A
Shingletown	2,291	926	40%	N/A	N/A	6%	N/A	N/A	N/A
Cherokee	100	39	39%	N/A	N/A	0%	N/A	N/A	N/A
Butte Valley	907	345	38%	N/A	N/A	7%	N/A	N/A	N/A
Paradise	17,560	6,078	35%	N/A	N/A	15%	N/A	N/A	N/A
Berry Creek	1,278	330	26%	N/A	N/A	34%	N/A	N/A	N/A
Tehama	503	120	24%	N/A	N/A	14%	N/A	N/A	N/A
Magalia	11,444	2,729	24%	N/A	N/A	14%	18	N/A	N/A
Happy Valley	5,652	1,315	23%	N/A	N/A	8%	N/A	N/A	N/A
Cohasset	497	107	22%	N/A	N/A	4%	3	N/A	N/A
Flournoy	161	34	21%	N/A	N/A	23%	N/A	N/A	N/A
Lake California	3,276	673	21%	N/A	N/A	18%	N/A	N/A	N/A
Yankee Hill	256	52	20%	N/A	N/A	19%	N/A	N/A	N/A
Durham	6,255	1,261	20%	N/A	N/A	4%	N/A	N/A	N/A
Gerber	1,084	211	19%	N/A	N/A	38%	N/A	N/A	N/A
Redding	92,025	17,746	19%	N/A	N/A	16%	N/A	N/A	N/A
Concow	472	91	19%	N/A	N/A	6%	N/A	N/A	N/A
Vina	212	39	18%	N/A	N/A	26%	N/A	N/A	N/A
Forest Ranch	1,551	278	18%	N/A	N/A	5%	N/A	N/A	N/A
Las Flores	217	38	18%	N/A	N/A	21%	N/A	N/A	N/A
Los Molinos	1,924	315	16%	N/A	N/A	26%	N/A	N/A	N/A
Rancho Tehama Reserve	1,750	280	16%	N/A	N/A	34%	N/A	N/A	N/A
Richfield	341	54	16%	N/A	N/A	17%	N/A	N/A	N/A
Cottonwood	5,435	848	16%	N/A	N/A	14%	N/A	N/A	N/A
Anderson	10,479	1,447	14%	N/A	N/A	19%	N/A	N/A	N/A
Red Bluff	14,091	1,921	14%	N/A	N/A	24%	63	N/A	N/A
Stirling City	300	40	13%	N/A	N/A	64%	N/A	N/A	N/A
Nord	368	49	13%	N/A	N/A	0%	N/A	N/A	N/A
Chico	98,683	12,297	12%	N/A	N/A	22%	250	N/A	N/A
Orland	7,843	949	12%	N/A	N/A	19%	N/A	N/A	N/A
Hamilton City	2,446	219	9%	N/A	N/A	15%	N/A	N/A	N/A
Corning	7,589	671	9%	N/A	N/A	20%	N/A	N/A	N/A
Mineral	250	20	8%	N/A	N/A	4%	N/A	N/A	N/A
Butte Meadows	25	N/A	0%	N/A	N/A	0%	N/A	N/A	N/A
Dales	0	N/A	N/A	N/A	N/A	0%	N/A	N/A	N/A

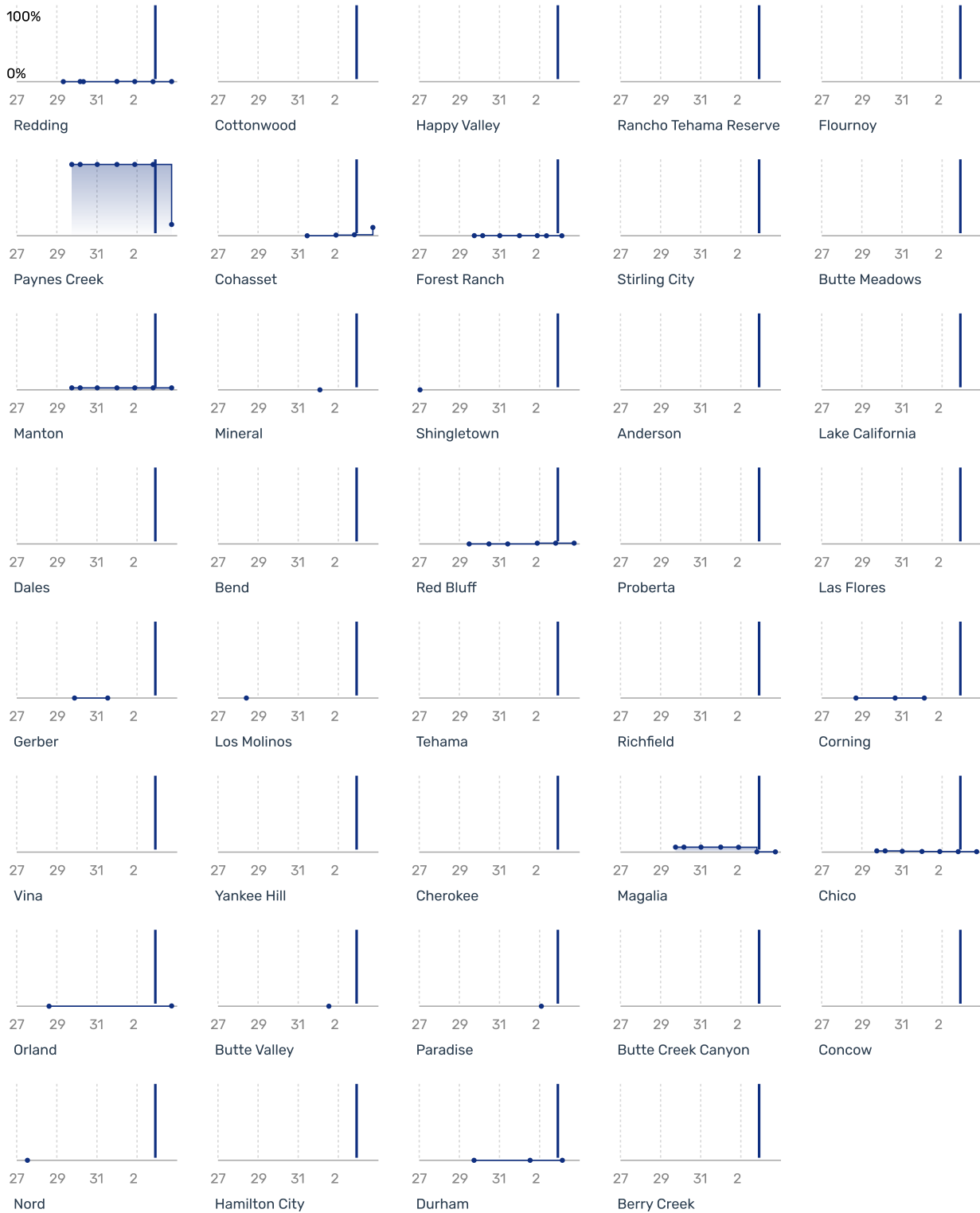
Location	Total Pop.	Pop. > 65 yrs	% of Pop. > 65 yrs ▼	% of Women Pop.	% of Children Under 5	% of Pop. Below Poverty Level	Num. Customers Without Power	DME Users	DME Users / 100K Pop.
Proberta	36	N/A	0%	N/A	N/A	0%	N/A	N/A	N/A

Power Outages

Counties



Places



CrisisReady is a research response platform at the Harvard Data Science Initiative and Direct Relief that advances data-driven decision making in emergency response. Contact us at info.crisisready.io to get in touch.

