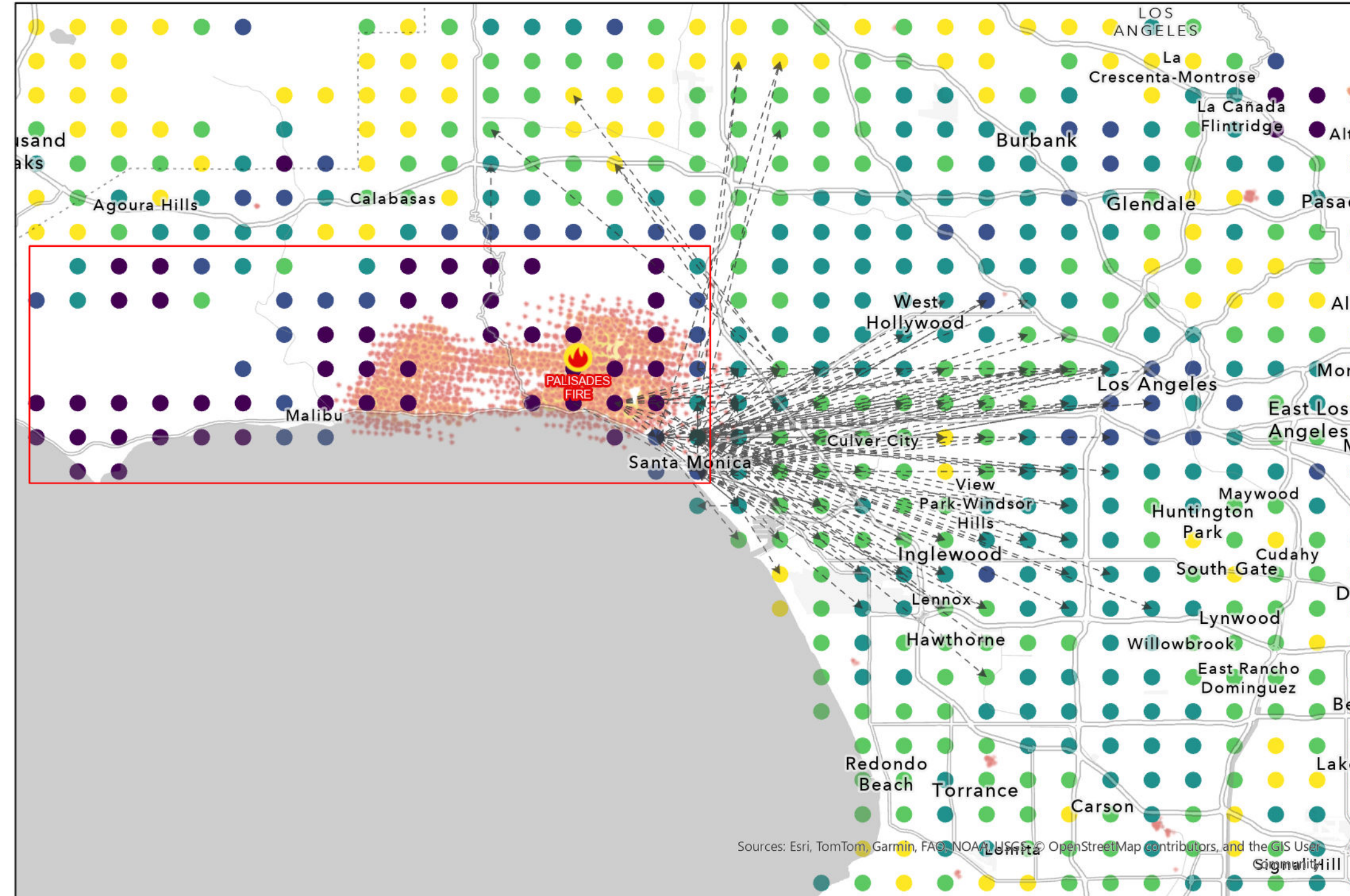


Palisades Fire: Los Angeles, CA

January 7th, 2025



The Palisades Fire started at 10:30am on January 7th, 2025 in Topanga State Park to the west of Los Angeles. As of the morning of January 8th, according to CalFIRE the burn covers 2,925 acres and is considered to be at high risk of rapid spread, fueled by high winds and long-term drought.

According to population data from Data for Good at Meta, the area of principal population decrease between Malibu and Santa Monica (inside the rectangle on the map) saw a decline of 20% of population by the evening of January 7th as compared to the 90-day pre-event baseline. The dispersion pattern of population from the fire moved principally towards the east and north.

