

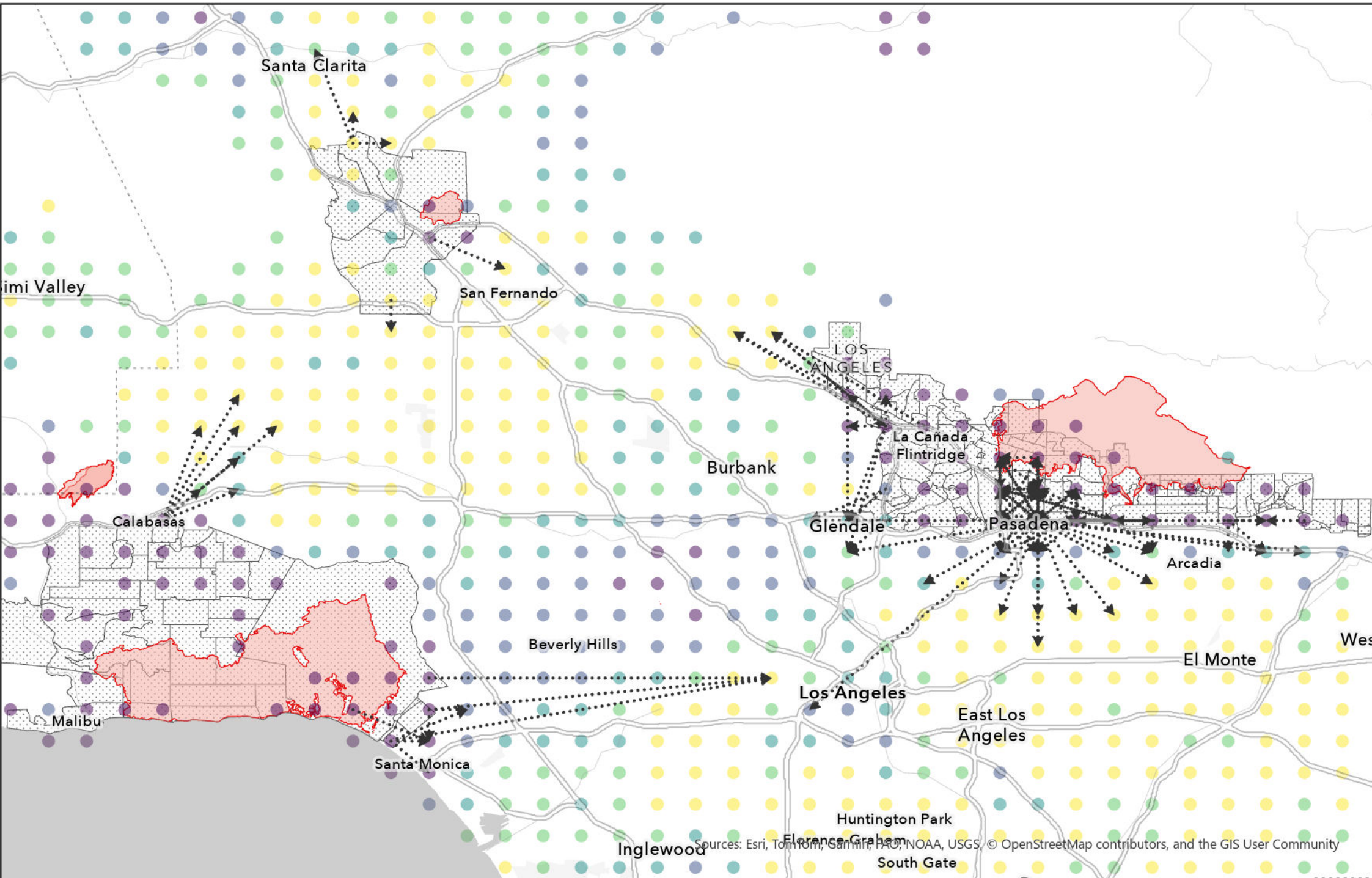
Los Angeles Fires: Palisades, Eaton, Kenneth, Hurst

January 9th, 2025 at 4pm PT

Multiple fires have spread across more than 25,000 acres of the Los Angeles region since the Palisades fire broke out on the morning of January 7th due to a combination of drought and high winds. At least 10 people have been killed and 180,000 are under evacuation orders. At least 10,000 structures have been destroyed.

Based on human mobility data from Data for Good at Meta, significant population movements have been detected across the city with declines of as much as 70% in the mandatory evacuation areas as compared to the 90-day pre-crisis baseline.

This map shows standardized scores for population density changes as of the afternoon of January 9th as well as the primary pathways for movement detected from the evacuation zones since the morning of January 7th.



Legend

- Movement_0107_0109
- calfire_evaczones_0109_0800
- FB Pop 0109_1600PT
- z_score
 - 4.000000 - -2.063177
 - 2.063176 - -0.074769
 - 0.074768 - 1.125736
 - 1.125737 - 2.606893
 - 2.606894 - 4.000000
- USA Active Wildfires - Current_Perimeters
 - Wildfire Daily Fire Perimeter
 - Prescribed Fire

Sources: Esri, TomTom, Garmin, FAO, NOAA, USGS, © OpenStreetMap contributors, and the GIS User Community