



LA Fire Situation Report for Jan 8, 2025 at 19:00 EST

Data last updated on Jan 10, 2025 at 00:00 EST

01 Movement

02 Vulnerability

03 Infrastructure

Summary

According to CalFire, the Eaton Fire, located in the Eaton Canyon area north of Pasadena, has consumed 10,600 acres and as of January 9th is considered to be 0% contained.

Mandatory evacuations and warnings have been issued throughout the area from La Crescenta in the east to Bradbury in the west.

See more from CalFire on this incident here: <https://www.fire.ca.gov/incidents/2025/1/7/eaton-fire>.

Based on human mobility data from Data for Good at Meta as of 4pm PT on the 8th of January there have been significant population movements across the affected area.

Areas within the mandatory evacuation zone, including La Crescenta-Montrose (-39%), Sierra Madre (-52%), La Cañada Flintridge (-65%) and Altadena (-70%) saw the greatest overall population decreases.

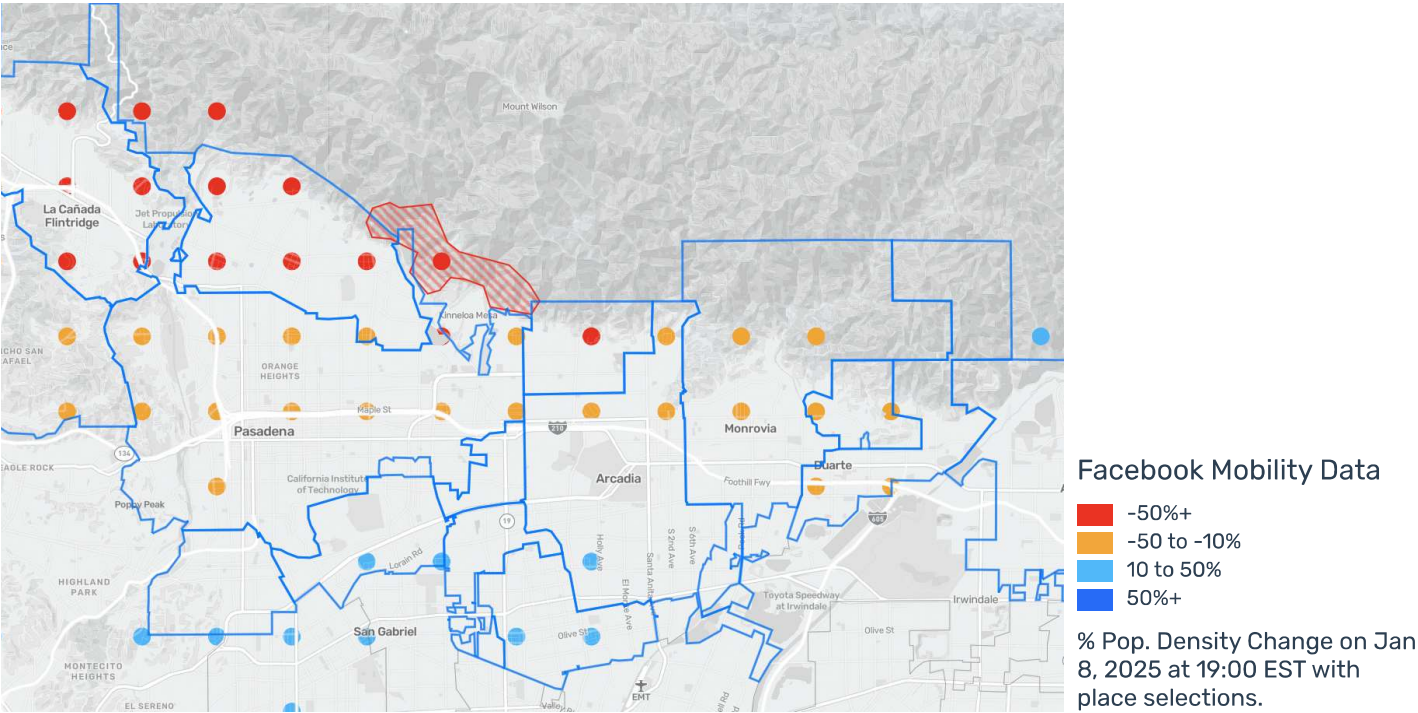
Areas in the evacuation warning zones including Duarte (-18%), Monrovia (-21%), Pasadena (-23%), and Bradbury (-27%) saw smaller but still significant declines.

Altadena and Sierra Madre are considered highly socially vulnerable, with population over 65 at 20% of total population. These areas are also subject to widespread power outage.

The Facebook and US Census population is relatively highly correlated throughout this area with an R2 value of 0.9. Two significant outliers are driving a high amount of the variance, with Glendale having a higher than expected proportion of Facebook users to population and Burbank a lower than expected number.

MOVEMENT

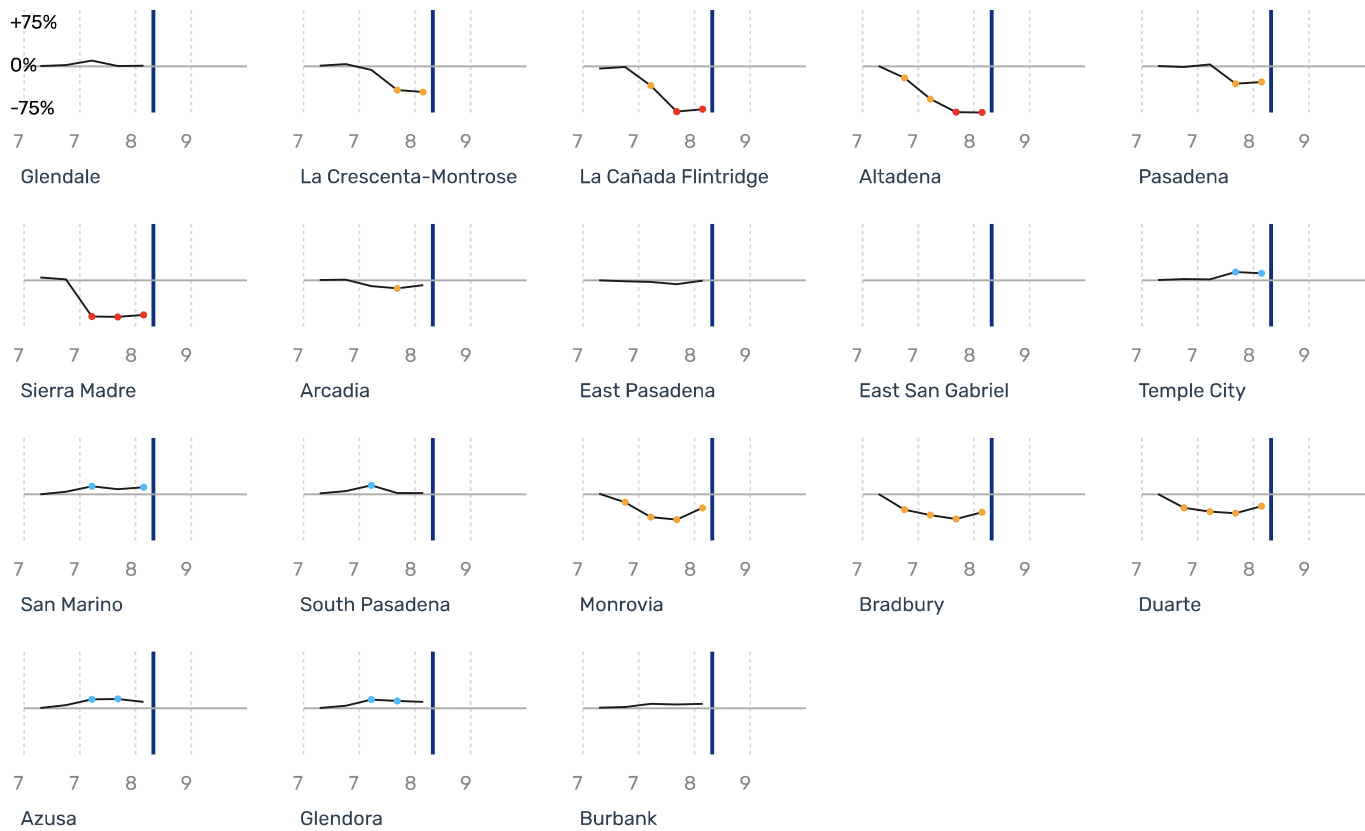
% Pop. Density Change on Jan 8, 2025 at 19:00 EST



Population Density on Jan 8, 2025 at 19:00 EST

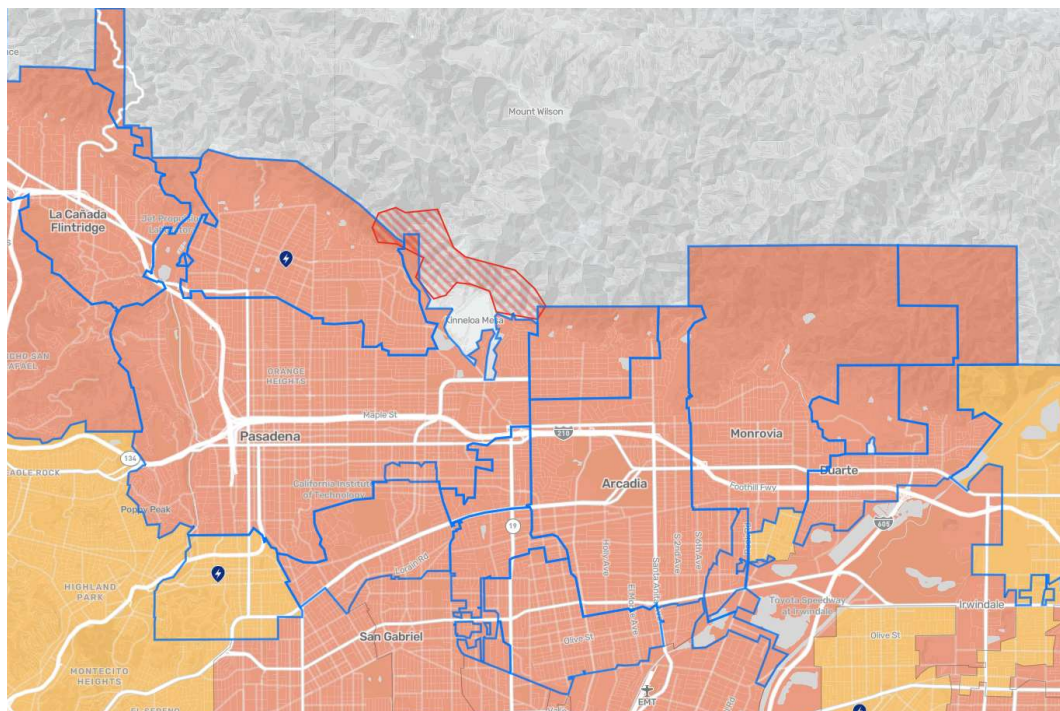
Location	Baseline Pop.	Current Crisis Pop.	Pop. Density vs. Baseline ▼	Confidence Level
Los Angeles	3106709	3222589	4%	N/A
San Marino	6430	7119	11%	N/A
Temple City	9669	10702	11%	N/A
Glendora	16912	18537	10%	N/A
Azusa	12060	13211	10%	N/A
Burbank	36837	39386	7%	N/A
South Pasadena	2924	2982	2%	N/A
Glendale	40598	40980	1%	N/A
East Pasadena	4585	4559	-1%	N/A
Arcadia	14690	13671	-7%	N/A
Duarte	5656	4640	-18%	N/A
Monrovia	7297	5799	-21%	N/A
Pasadena	38306	29323	-23%	N/A
Bradbury	2569	1873	-27%	N/A
La Crescenta-Montrose	5377	3289	-39%	N/A
Sierra Madre	1156	551	-52%	N/A
La Cañada Flintridge	5240	1851	-65%	N/A
Altadena	9983	3039	-70%	N/A
East San Gabriel	N/A	N/A	N/A	N/A

% Pop. Density Change Over Time



VULNERABILITY

Pop. > 65 yrs on Jan 8, 2025 at 19:00 EST



% of Pop. > 65 yrs

0% 13% 22% 36% 65% 100%

2020 ACS 5-Year Estimates

Demographics

Location	Total Pop.	Pop. > 65 yrs	% of Pop. > 65 yrs ▼	% of Women Pop.	% of Children Under 5	% of Pop. Below Poverty Level	Num. Customers Without Power	DME Users	DME Users / 100K Pop.
Los Angeles	10,040,682	1,370,141	14%	N/A	N/A	14%	226,677	34843	0.3484
Sierra Madre	10,829	2,171	20%	N/A	N/A	6%	284	N/A	N/A
Altadena	43,037	8,627	20%	N/A	N/A	8%	827	N/A	N/A
East Pasadena	6,025	1,202	20%	N/A	N/A	5%	N/A	N/A	N/A
Duarte	21,399	4,185	20%	N/A	N/A	9%	N/A	N/A	N/A
San Marino	13,020	2,537	19%	N/A	N/A	7%	67	N/A	N/A
Bradbury	825	160	19%	N/A	N/A	5%	N/A	N/A	N/A
Arcadia	57,053	10,947	19%	N/A	N/A	9%	1,267	N/A	N/A
East San Gabriel	23,076	4,249	18%	N/A	N/A	8%	N/A	N/A	N/A
La Crescenta-Montrose	20,171	3,685	18%	N/A	N/A	7%	N/A	N/A	N/A
Glendale	199,357	35,730	18%	N/A	N/A	14%	11,088	N/A	N/A
Temple City	35,699	6,344	18%	N/A	N/A	10%	113	N/A	N/A
La Cañada Flintridge	20,078	3,564	18%	N/A	N/A	3%	20	N/A	N/A
Pasadena	142,017	23,154	16%	N/A	N/A	14%	3,959	N/A	N/A
Glendora	51,087	8,239	16%	N/A	N/A	7%	47	N/A	N/A
Burbank	103,411	16,100	16%	N/A	N/A	11%	20,157	N/A	N/A
Monrovia	37,636	5,172	14%	N/A	N/A	9%	N/A	N/A	N/A
South Pasadena	25,478	3,269	13%	N/A	N/A	7%	1,929	N/A	N/A
Azusa	49,584	5,467	11%	N/A	N/A	13%	N/A	N/A	N/A

Power Outages

Counties

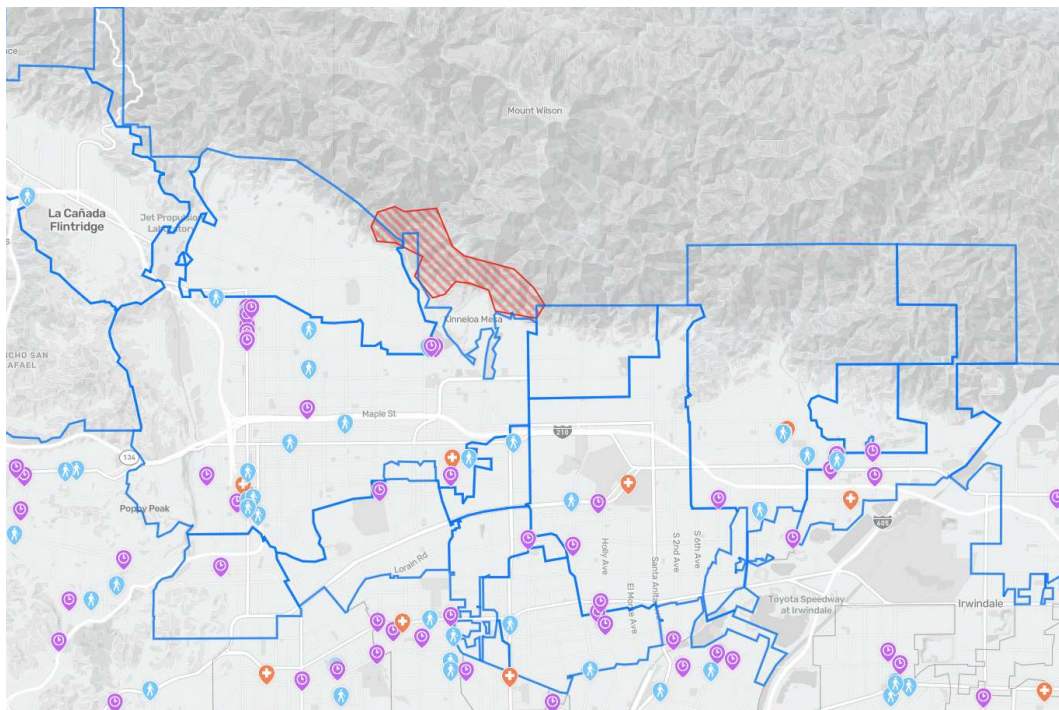


Places



INFRASTRUCTURE

Healthcare Facilities in and Around Place Selections on Jan 8, 2025 at 19:00 EST



- Hospitals
- Long Term / Other
- Outpatient

Health facilities in and around LA Fire on Jan 8, 2025 at 19:00 EST with place selections.

Types of Healthcare Facilities in Place Selections

Location	All ▼	Hospitals	Long Term / Other	Outpatient
Los Angeles	1,232	120	515	597
Glendale	35	3	19	13
Pasadena	32	2	16	14
Burbank	13	1	5	7
Glendora	11	2	5	4
Monrovia	6	1	1	4
Duarte	6	1	4	1
Arcadia	5	1	3	1
Azusa	5	0	2	3
Temple City	4	0	2	2
La Crescenta-Montrose	2	0	1	1
Altadena	2	0	1	1
East Pasadena	1	0	0	1
East San Gabriel	1	0	1	0
San Marino	1	0	1	0
South Pasadena	1	0	1	0
La Cañada Flintridge	0	0	0	0
Sierra Madre	0	0	0	0
Bradbury	0	0	0	0

CrisisReady is a research response platform at the Harvard Data Science Initiative and Direct Relief that advances data-driven decision making in emergency response. Contact us at info.crisisready.io to get in touch.

Report created on Jan 9, 2025 at 16:29 EST