

LA Fire Situation Report for Jan 14, 2025 at 19:00 EST

Data last updated on Jan 16, 2025 at 00:00 EST

01 Movement

02 Vulnerability

Summary

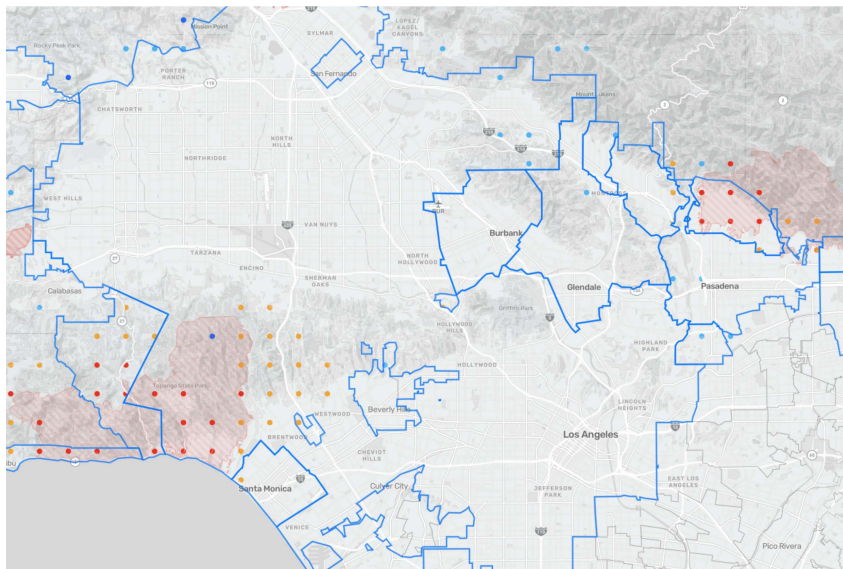
The Palisades and Eaton Fires ignited eight days ago, on January 7th. During that time those two fires have burned nearly 40,000 acres of highly populated land and multiple neighborhoods in Los Angeles. 25 people have been killed.

As of the afternoon of January 14th the principal population trend across the LA region was a return to baseline for almost all neighborhoods proximate to the fire-affected areas, but persistent low population densities relative to pre-crisis 90-day baseline in the three main zones of Altadena (-49%), Topanga (Pacific Palisades) (-44%), and Malibu (-36%). The community of Agoura Hills, which saw significant population decreases in the immediate aftermath of January 7th, has been at least 10% above baseline four days. A similar trend is evident in La Crescenta Montrose, near the Eaton Fire, which saw large evacuations in the days after the fires, but has been above baseline since January 11th.

The Facebook population is considered relatively highly representative of the population as a whole throughout Los Angeles, with an R2 value at the ACS Place level of 0.9.

MOVEMENT

% Pop. Density Change on Jan 14, 2025 at 19:00 EST



Facebook Mobility Data



% Pop. Density Change on Jan 14, 2025 at 19:00 EST with place selections.

Population Density on Jan 14, 2025 at 19:00 EST

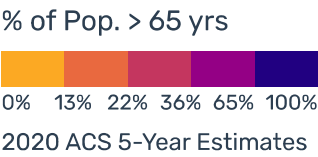
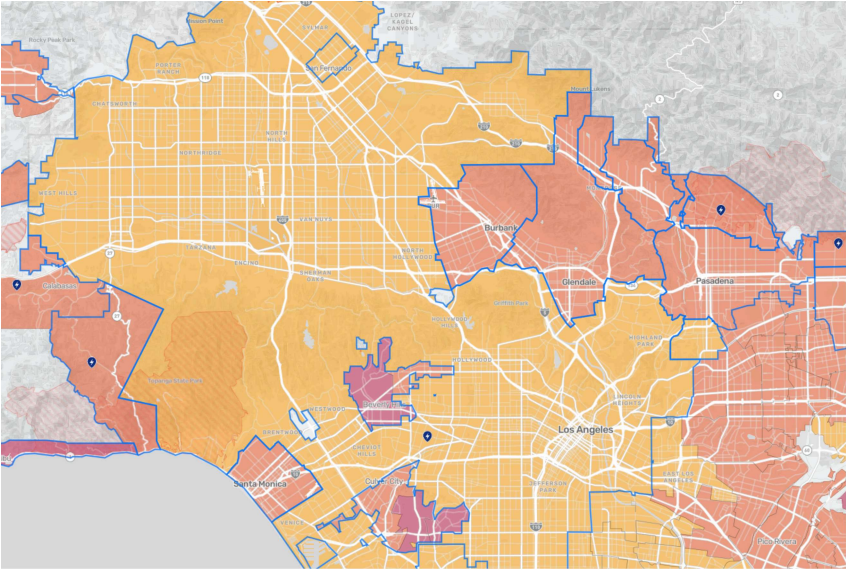
Location	Baseline Pop.	Current Crisis Pop.	Pop. Density vs. Baseline ▼	Confidence Level
Ventura	430035	445000	3%	N/A
Los Angeles	4660091	4791506	3%	N/A
Bell Canyon	734	837	14%	N/A
South Pasadena	4409	4862	10%	N/A
La Crescenta-Montrose	8067	8757	9%	N/A
Hidden Hills	1272	1374	8%	N/A
Glendale	60824	65185	7%	N/A
Duarte	8534	9144	7%	N/A
Agoura Hills	4014	4281	7%	N/A
Arcadia	21938	23377	7%	N/A
Monrovia	11022	11708	6%	N/A
Bradbury	3884	4102	6%	N/A
Thousand Oaks	52309	55160	5%	N/A
Burbank	55157	58102	5%	N/A
Santa Clarita	105607	110919	5%	N/A
Azusa	17965	18703	4%	N/A
Simi Valley	59678	61814	4%	N/A
Los Angeles	1880659	1943661	3%	N/A
Pasadena	57180	58449	2%	N/A
Moorpark	13014	13165	1%	N/A
Santa Monica	35743	34563	−3%	N/A
La Cañada Flintridge	7810	7340	−6%	N/A
Sierra Madre	1711	1591	−7%	N/A
Piru	1068	896	−16%	N/A
Malibu	1794	1157	−36%	N/A
Topanga	2828	1581	−44%	N/A
Altadena	14885	7554	−49%	N/A

% Pop. Density Change Over Time



VULNERABILITY

Pop. > 65 yrs on Jan 14, 2025 at 19:00 EST

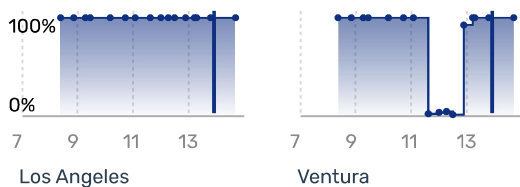


Demographics

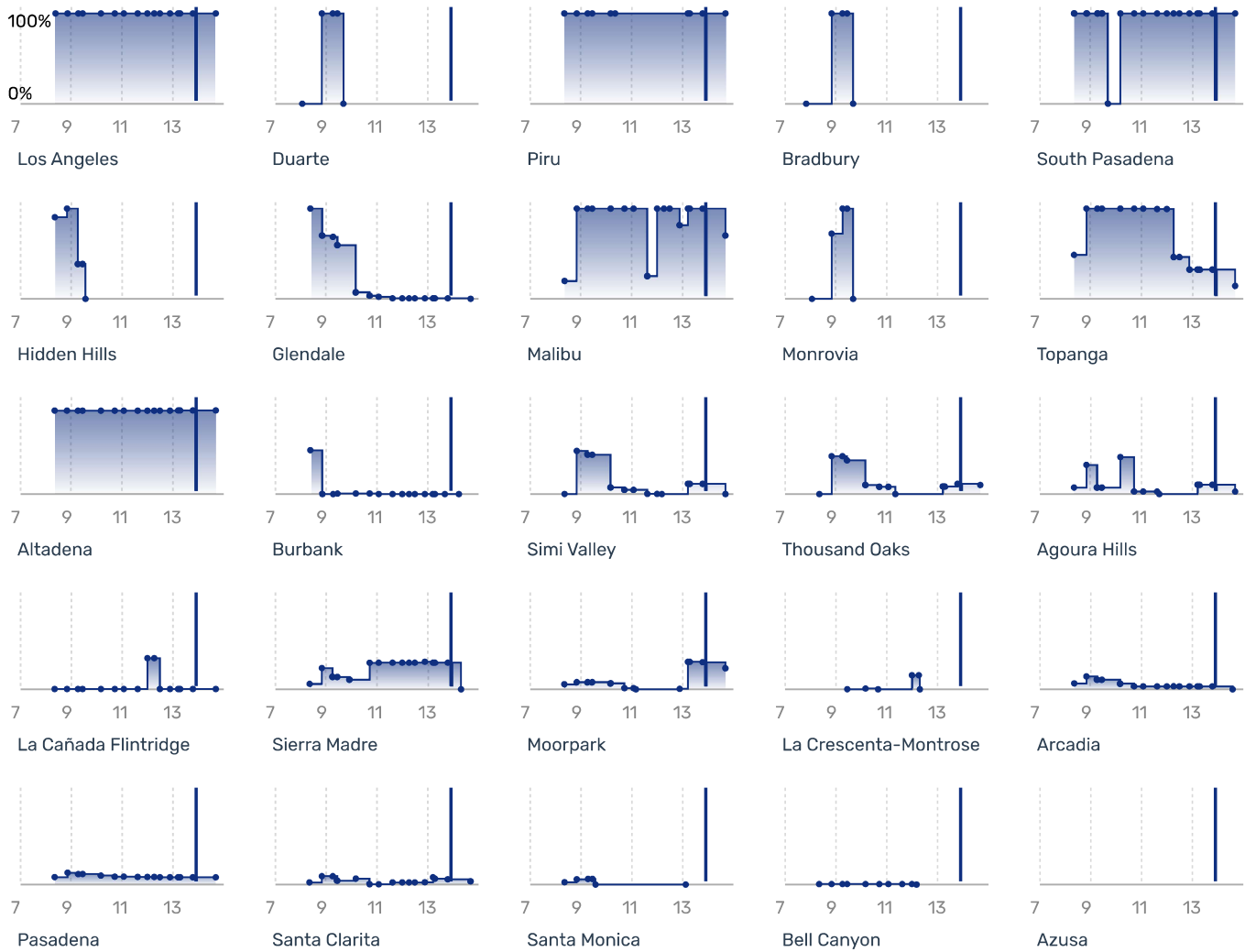
Location	Total Pop.	Pop. > 65 yrs	% of Pop. > 65 yrs ▼	% of Women Pop.	% of Children Under 5	% of Pop. Below Poverty Level	Num. Customers Without Power	DME Users	DME Users / 100K Pop.
Ventura	845,599	131,672	16%	N/A	N/A	9%	20,969	3888	0.0389
Los Angeles	10,040,682	1,370,141	14%	N/A	N/A	14%	44,666	34843	0.3484
Malibu	12,280	3,115	25%	N/A	N/A	11%	6,609	N/A	N/A
Sierra Madre	10,829	2,171	20%	N/A	N/A	6%	1,379	N/A	N/A
Altadena	43,037	8,627	20%	N/A	N/A	8%	828	N/A	N/A
Topanga	8,098	1,592	20%	N/A	N/A	6%	951	N/A	N/A
Thousand Oaks	127,648	25,035	20%	N/A	N/A	7%	5,289	N/A	N/A
Duarte	21,399	4,185	20%	N/A	N/A	9%	N/A	N/A	N/A
Bradbury	825	160	19%	N/A	N/A	5%	N/A	N/A	N/A
Arcadia	57,053	10,947	19%	N/A	N/A	9%	645	N/A	N/A
Piru	2,126	392	18%	N/A	N/A	17%	1,216	N/A	N/A
La Crescenta-Montrose	20,171	3,685	18%	N/A	N/A	7%	N/A	N/A	N/A
Glendale	199,357	35,730	18%	N/A	N/A	14%	35	N/A	N/A
Santa Monica	91,600	16,411	18%	N/A	N/A	10%	N/A	N/A	N/A
La Cañada Flintridge	20,078	3,564	18%	N/A	N/A	3%	20	N/A	N/A
Pasadena	142,017	23,154	16%	N/A	N/A	14%	3,885	N/A	N/A
Bell Canyon	1,991	317	16%	N/A	N/A	5%	N/A	N/A	N/A
Agoura Hills	20,269	3,204	16%	N/A	N/A	4%	760	N/A	N/A
Simi Valley	125,768	19,802	16%	N/A	N/A	7%	4,918	N/A	N/A
Burbank	103,411	16,100	16%	N/A	N/A	11%	N/A	N/A	N/A
Hidden Hills	2,218	326	15%	N/A	N/A	9%	N/A	N/A	N/A
Moorpark	36,443	5,155	14%	N/A	N/A	4%	3,474	N/A	N/A
Monrovia	37,636	5,172	14%	N/A	N/A	9%	N/A	N/A	N/A
Los Angeles	3,973,278	510,787	13%	N/A	N/A	17%	19,722	N/A	N/A
South Pasadena	25,478	3,269	13%	N/A	N/A	7%	N/A	N/A	N/A
Santa Clarita	212,519	24,632	12%	N/A	N/A	9%	4,024	N/A	N/A
Azusa	49,584	5,467	11%	N/A	N/A	13%	N/A	N/A	N/A

Power Outages

Counties



Places



CrisisReady is a research response platform at the Harvard Data Science Initiative and Direct Relief that advances data-driven decision making in emergency response. Contact us at info.crisisready.io to get in touch.

Report created on Jan 15, 2025 at 16:57 EST